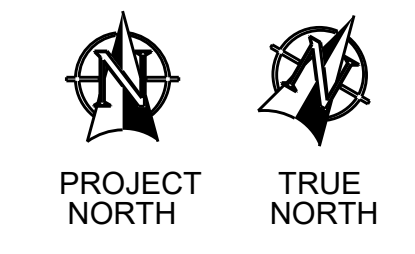


**LEGEND**

SEE PLAN SEE PLAN COLUMN PROFILE ANCHOR ROD QTY - PIECE MARK DETAIL MARK

U.N.O - UNLESS NOTED OTHERWISE.  
 B.O.BPL - BOTTOM OF BASE PLATE.  
 T.O.P - TOP OF PIER  
 PCMK - PIECE MARK  
 SSL - STRUCTURAL SLAB LEVEL  
 EL. - ELEVATION

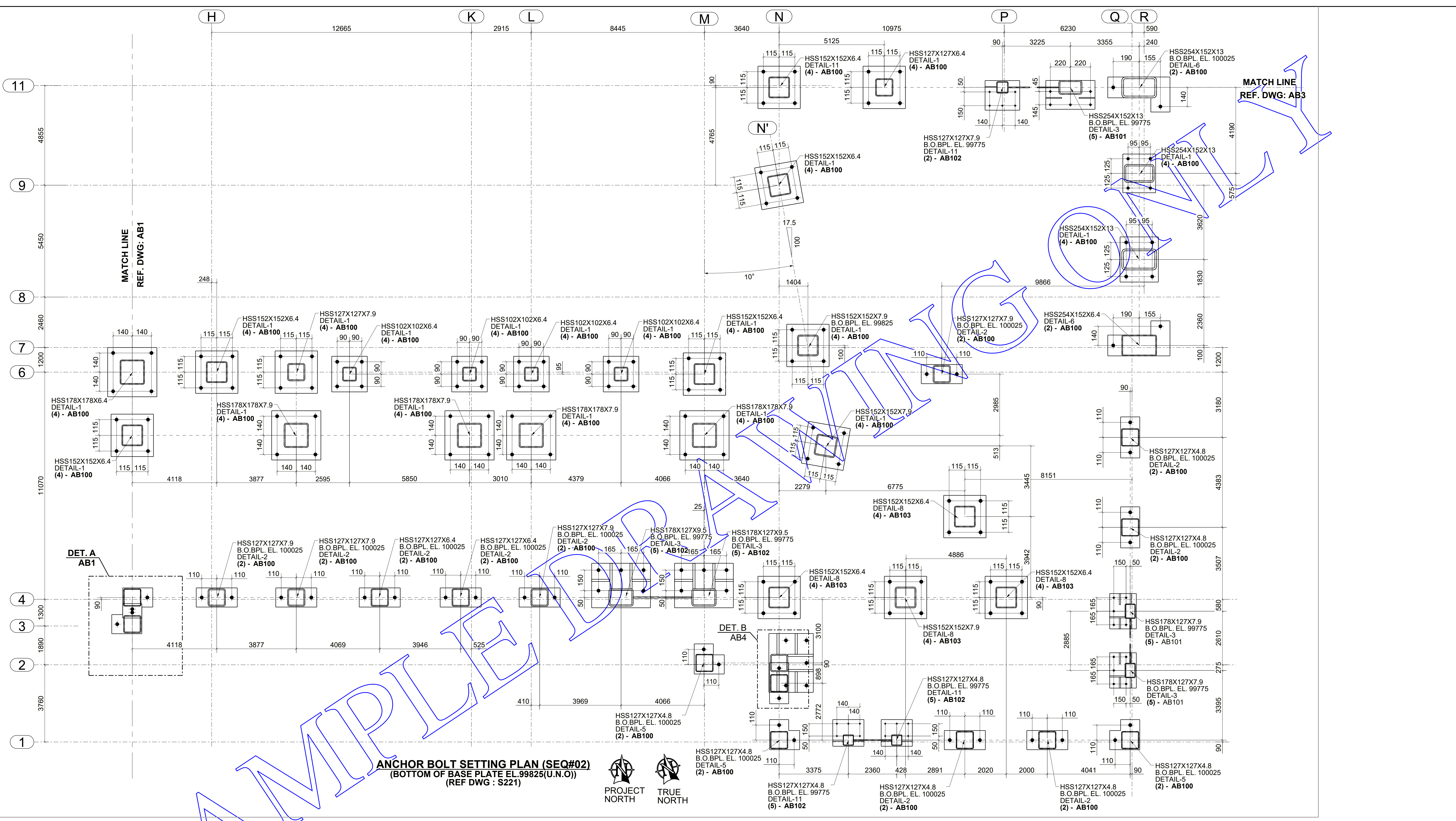
**ANCHOR BOLT SETTING PLAN AT ROOF SCREEN WALL**



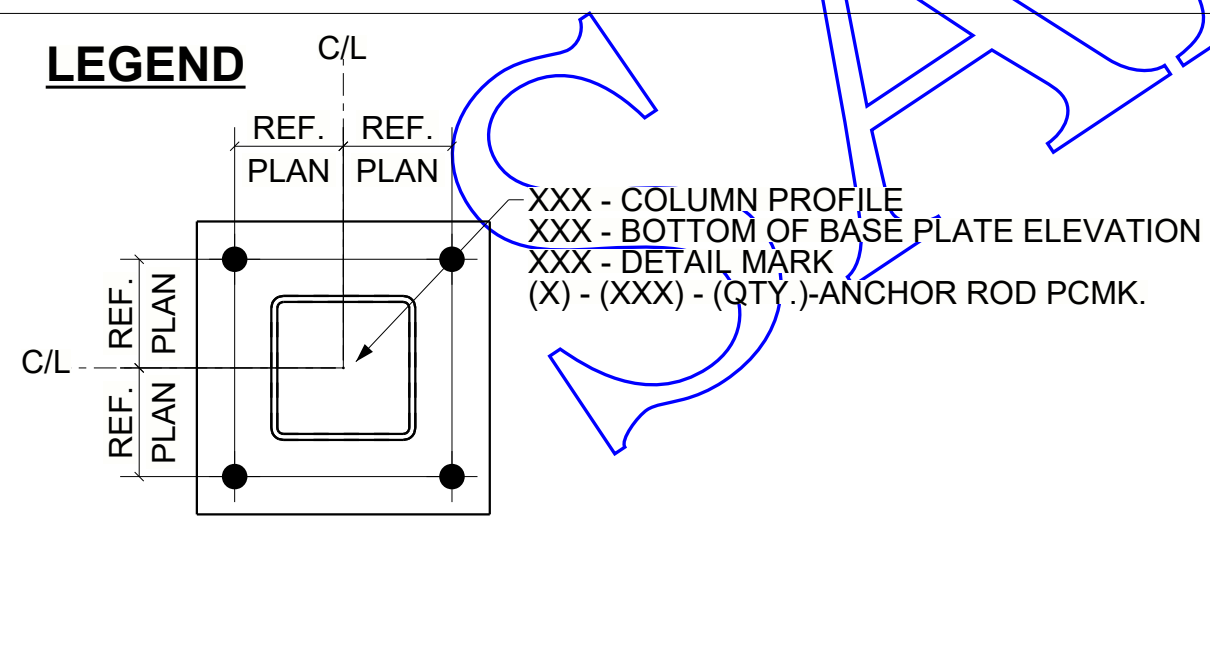
Client:			
Engineer:			
Project Address:			
Project Description: Main and Misc. steel for Zibi Block 211			
Drawing Description: ANCHOR BOLT PLAN			
Date:	Scale:	Drawn By: SAM	Checked By: MAK
Project Number: 2364	Drawing Number: AB1	2	

Tadris Structures





**ANCHOR BOLT SETTING PLAN (SEQ#02)**  
 (BOTTOM OF BASE PLATE EL. 99825(U.N.O))  
 (REF DWG : S221)

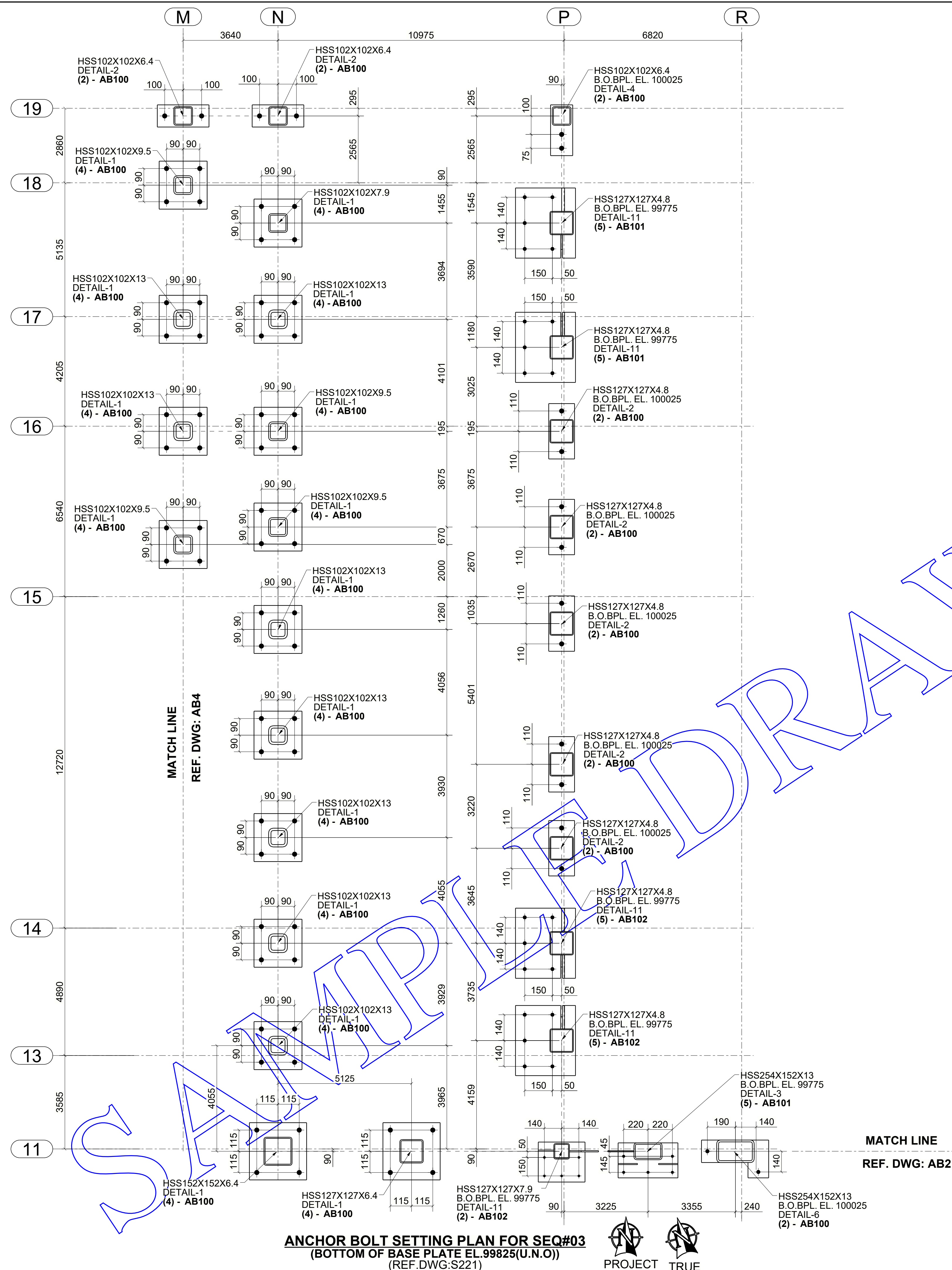


**LEGEND:-**  
 U.N.O - UNLESS NOTED OTHERWISE.  
 B.O.BPL - BOTTOM OF BASE PLATE.

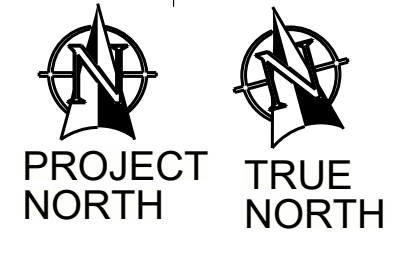
**G.C NOTE:-**  
 GC TO LEAVE POCKETS TO CLEAR BRACE PLATES WHEREVER REQUIRED.

**NOTE #1:** ARCHITECT, ENGINEER & G.C. PLEASE NOTE:  
 IF NO COMMENTS APPEAR ON THIS DRAWING WHEN THE DRAWING ISSUED FOR APPROVAL / REVIEW, THEN ECOSSE WELDING.  
 WILL ASSUME THAT ITS INTERPRETATION OF ARCHITECTURAL AND STRUCTURAL DRAWINGS IS ACCEPTABLE BY ALL PARTIES AND FABRICATION WILL PROCEED ACCORDINGLY.

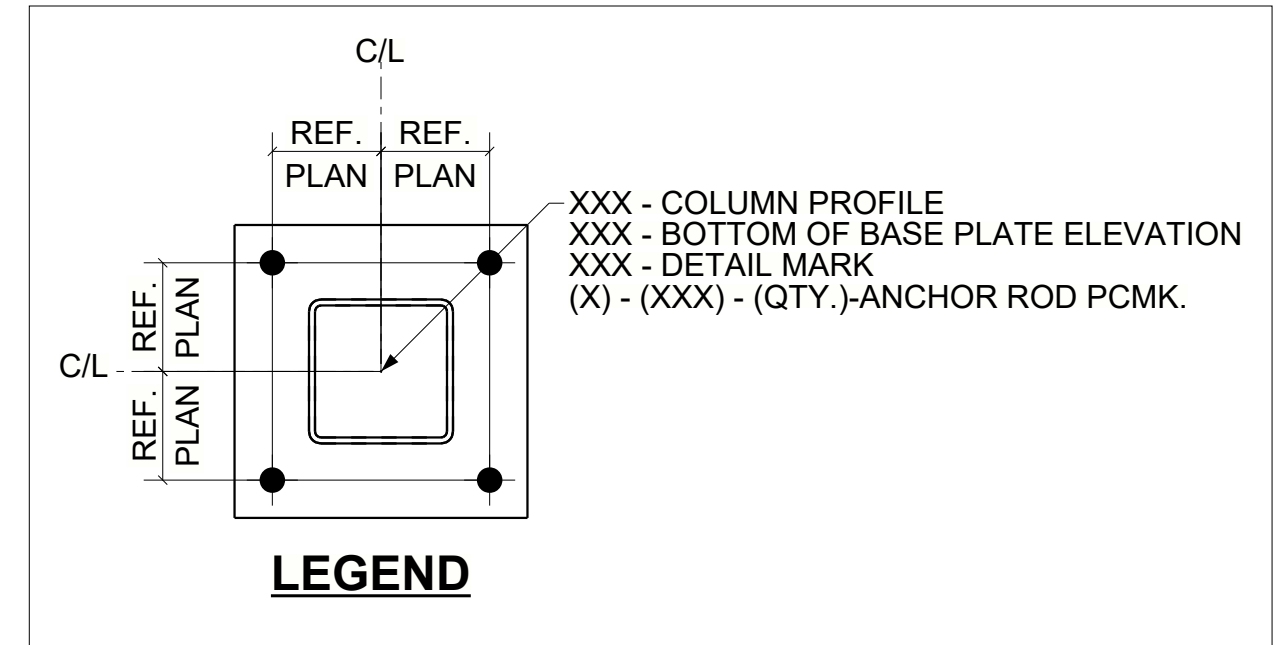
<b>PROJECT:</b>		<b>REV:</b>	
<b>CUSTOMER:</b>		0	
<b>DETAIL:</b> ANCHOR BOLT SETTING PLAN FOR SEQ#02			
<b>DRAWN BY:</b> SGH	<b>CHECKED BY:</b> MAK	<b>JOB NUMBER:</b> 7000	<b>DWG NUMBER:</b> AB2
<b>DATE:</b>	<b>PLOT DATE:</b>		



**ANCHOR BOLT SETTING PLAN FOR SEQ#03**  
 (BOTTOM OF BASE PLATE EL. 99825(U.N.O))  
 (REF. DWG: S221)



**G.C NOTE:**  
 GC TO LEAVE POCKETS TO CLEAR BRACE PLATES WHEREVER REQUIRED.

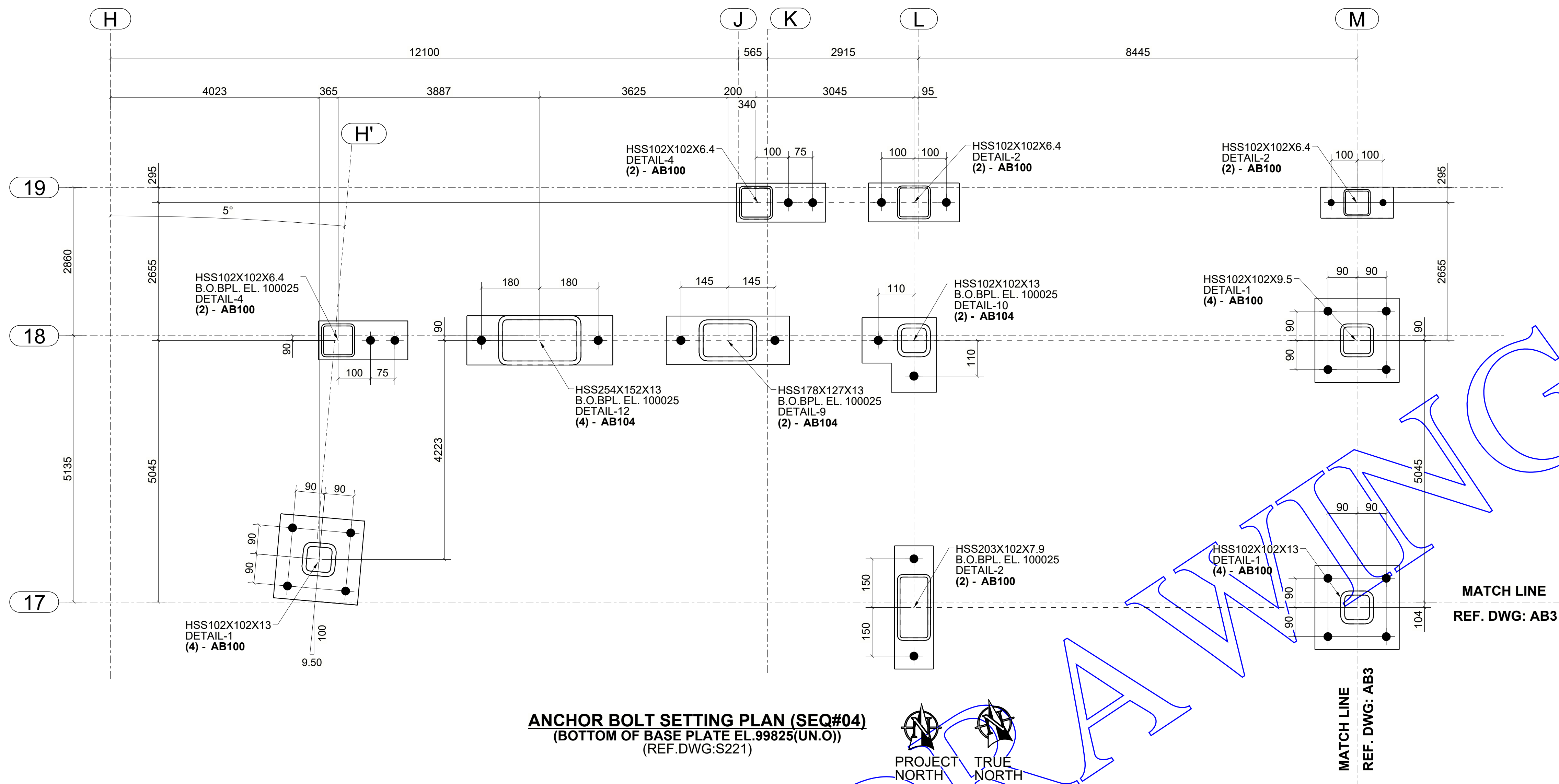


**LEGEND:-**  
 U.N.O - UNLESS NOTED OTHERWISE.  
 B.O.BPL - BOTTOM OF BASE PLATE.

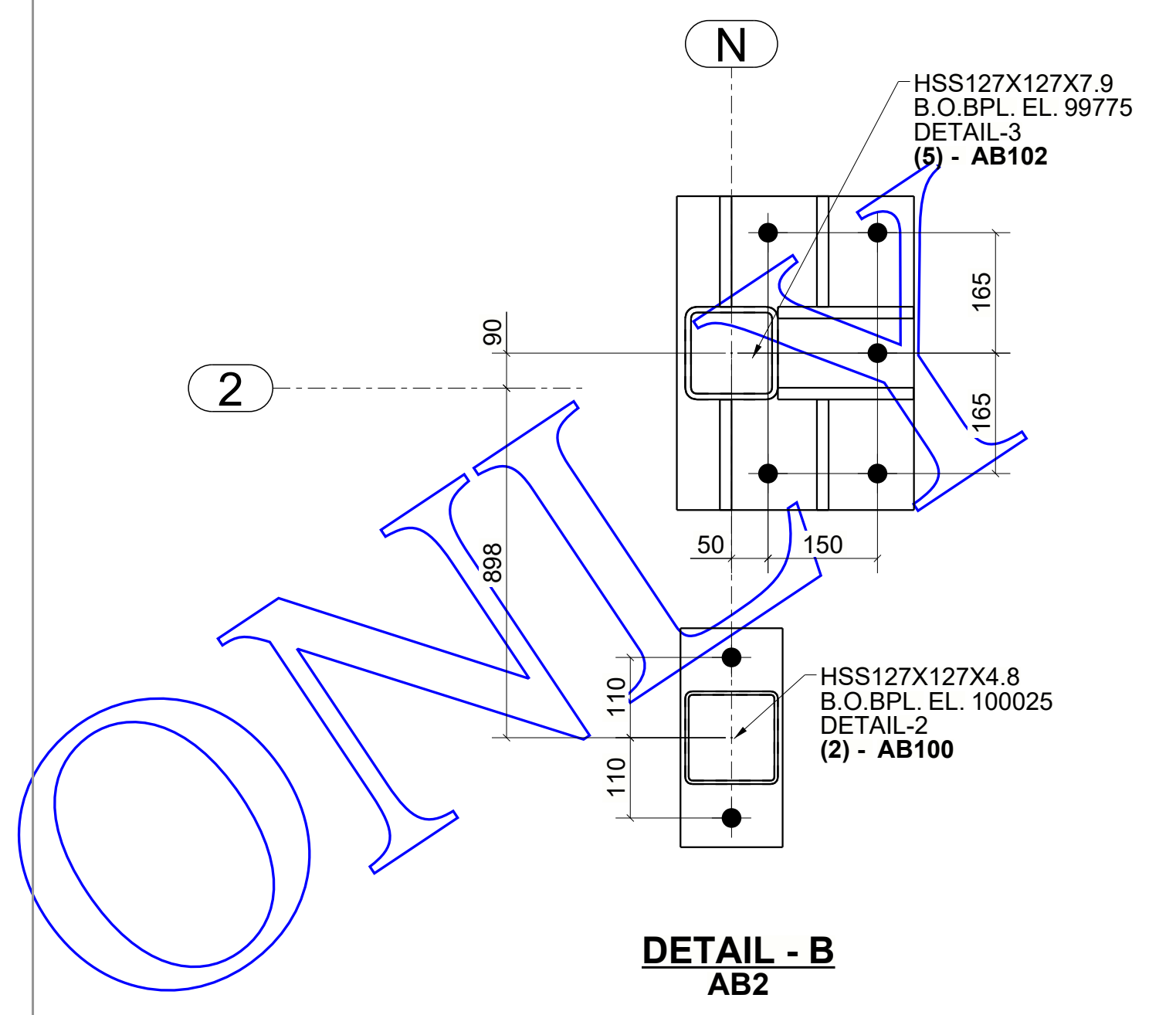
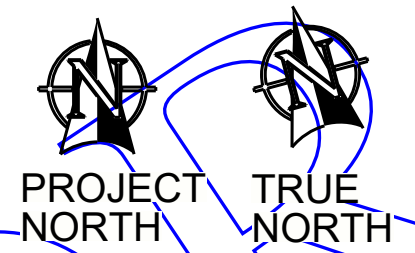
**NOTE #1:** ARCHITECT, ENGINEER & G.C. PLEASE NOTE:  
 IF NO COMMENTS APPEAR ON THIS DRAWING WHEN THE DRAWING ISSUED FOR APPROVAL / REVIEW, THEN ECOSSE WELDING.  
 WILL ASSUME THAT IT'S INTERPRETATION OF ARCHITECTURAL AND STRUCTURAL DRAWINGS IS ACCEPTABLE BY ALL PARTIES AND FABRICATION WILL PROCEED ACCORDINGLY.

<b>PROJECT:</b>		<b>CUSTOMER:</b>		<b>REV:</b> 0
DRAWN BY: SGH		CHECKED BY: MAK		
DATE:	JOB NUMBER: 7000	DWG NUMBER: AB3		

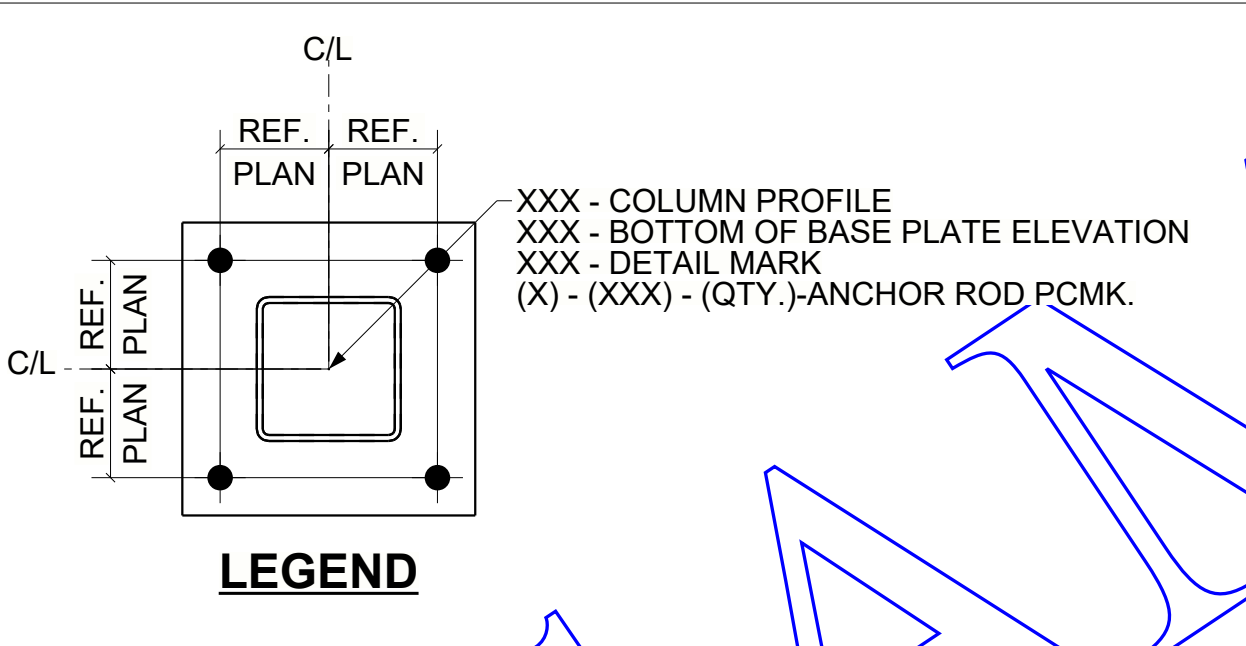
DRAWING ONLY



**ANCHOR BOLT SETTING PLAN (SEQ#04)**  
 (BOTTOM OF BASE PLATE EL. 99825(UN.O))  
 (REF.DWG:S221)



**LEGEND:-**  
 U.N.O - UNLESS NOTED OTHERWISE.  
 B.O.BPL - BOTTOM OF BASE PLATE.

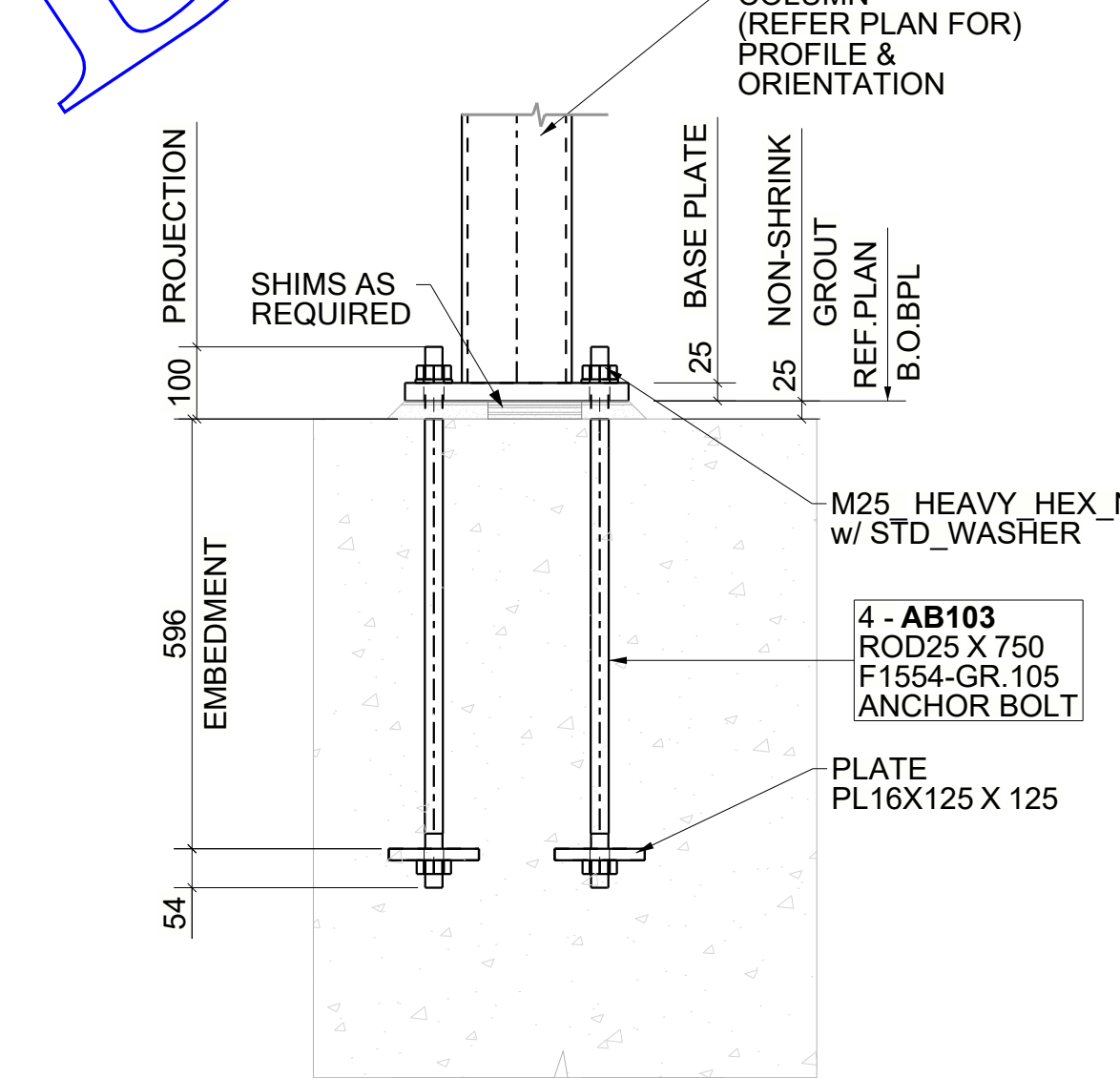
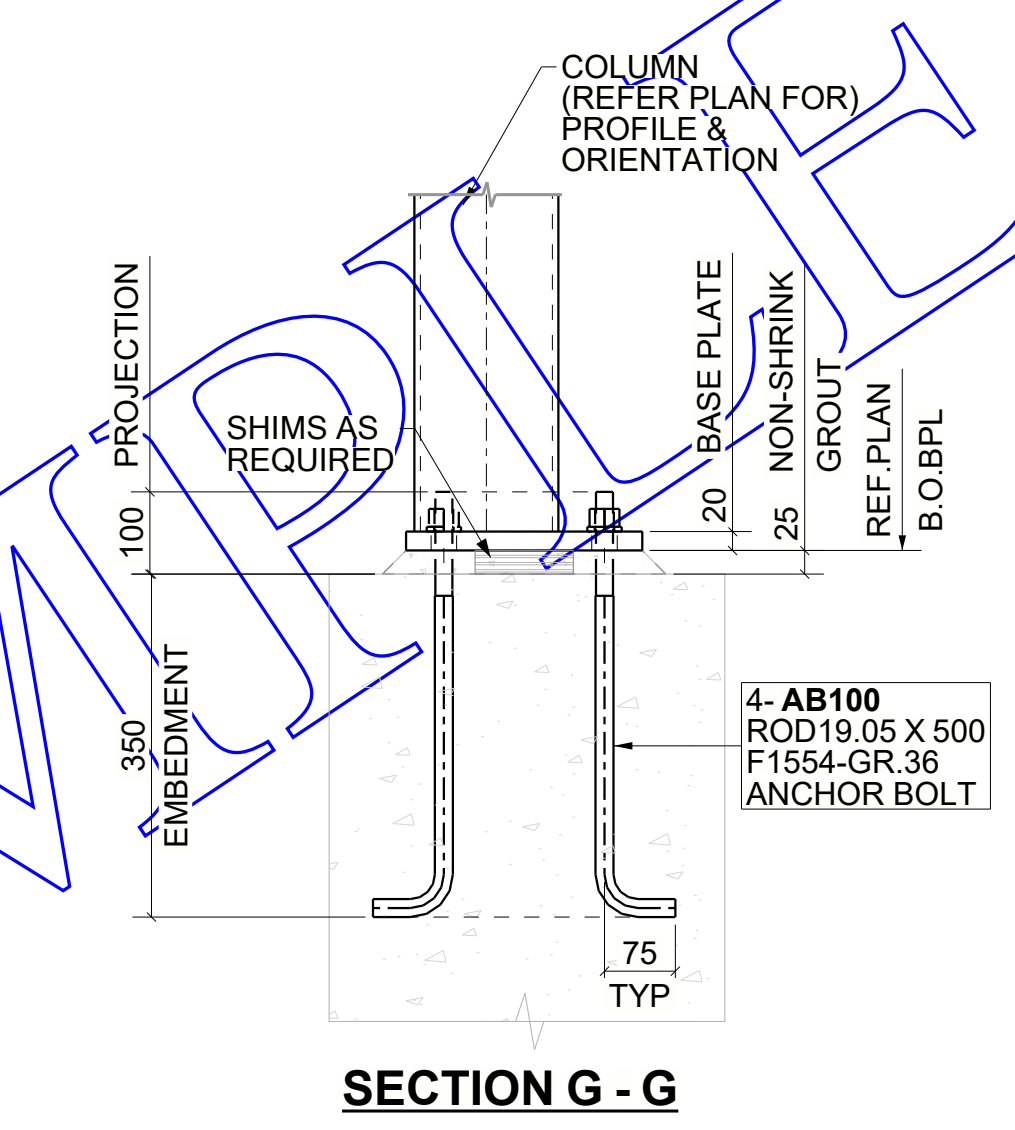
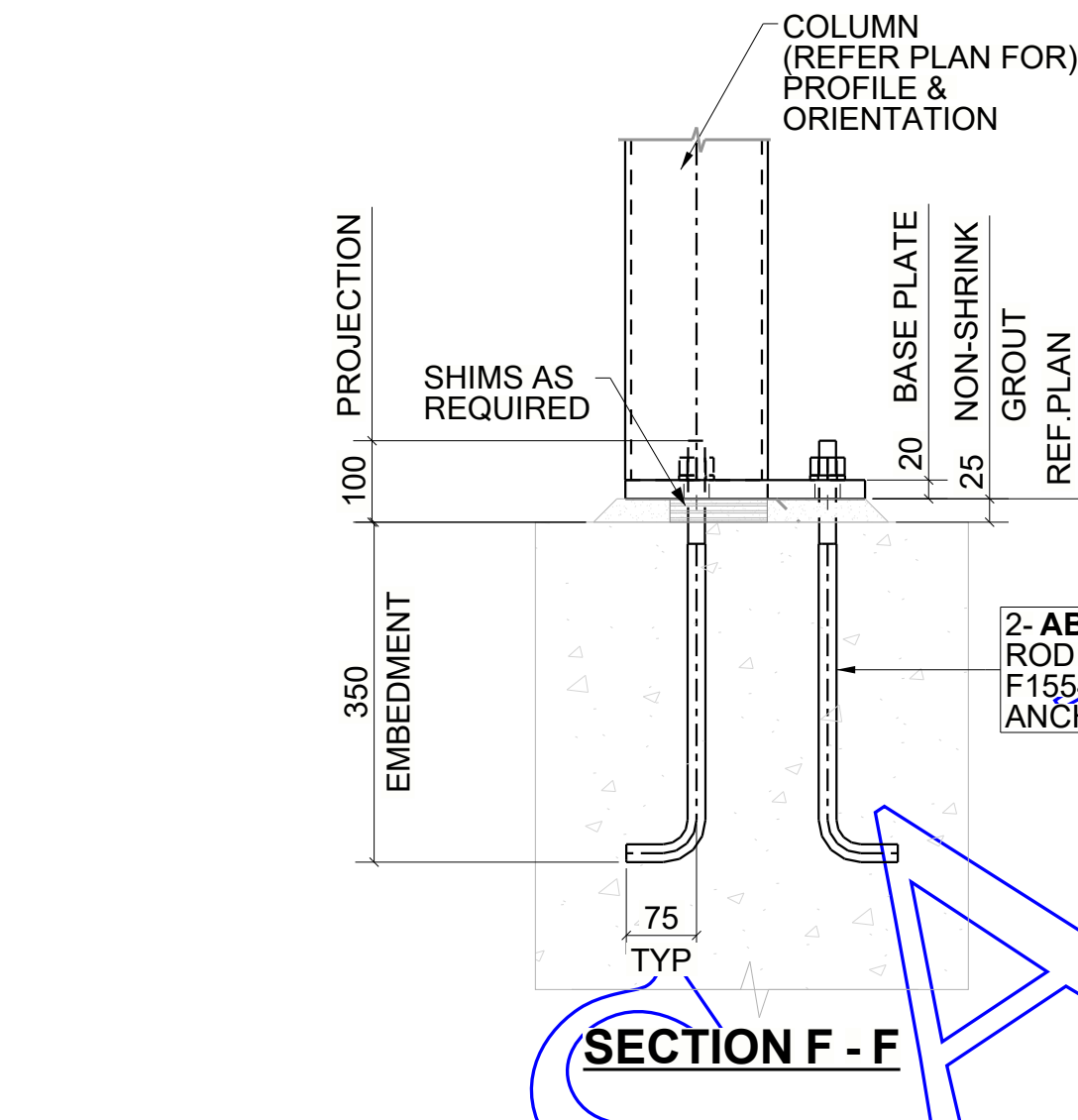
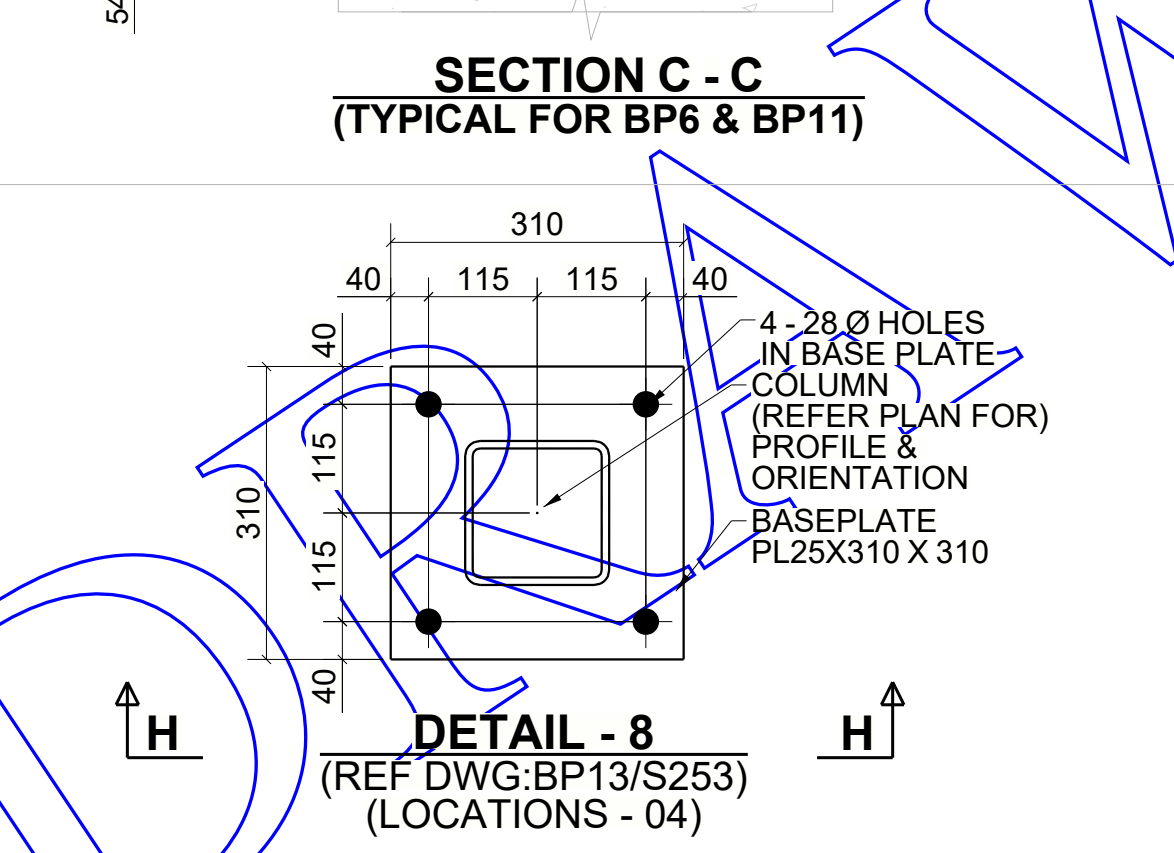
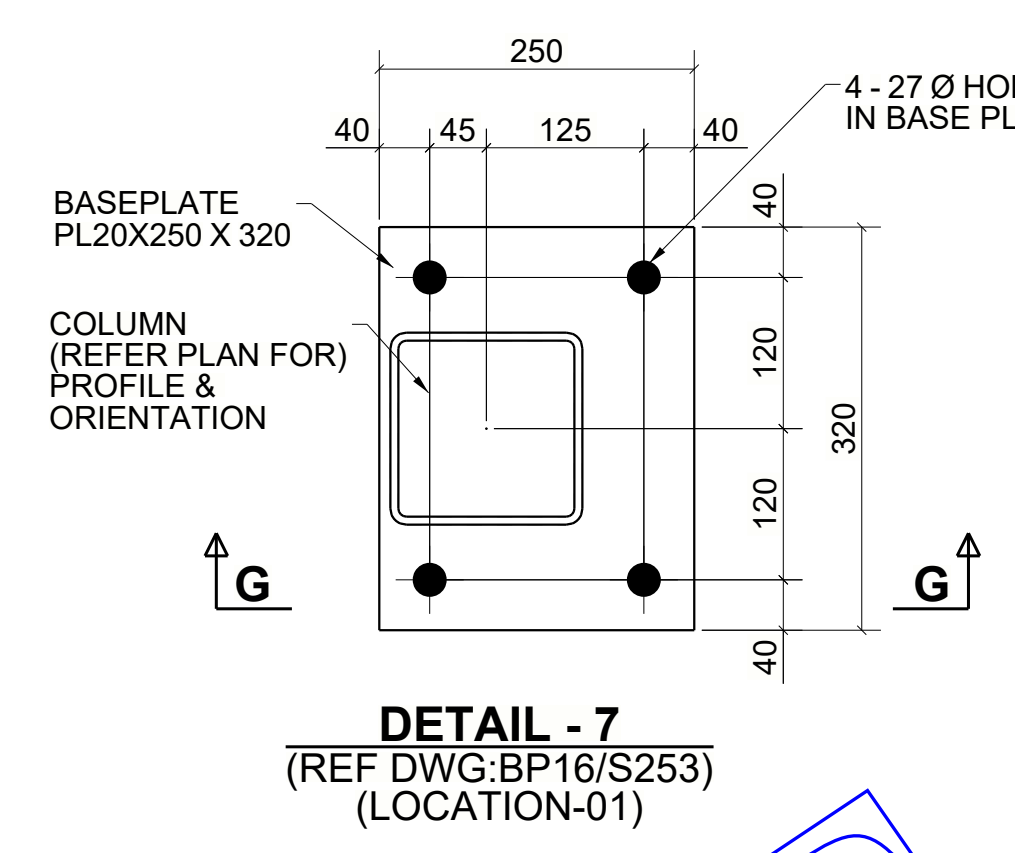
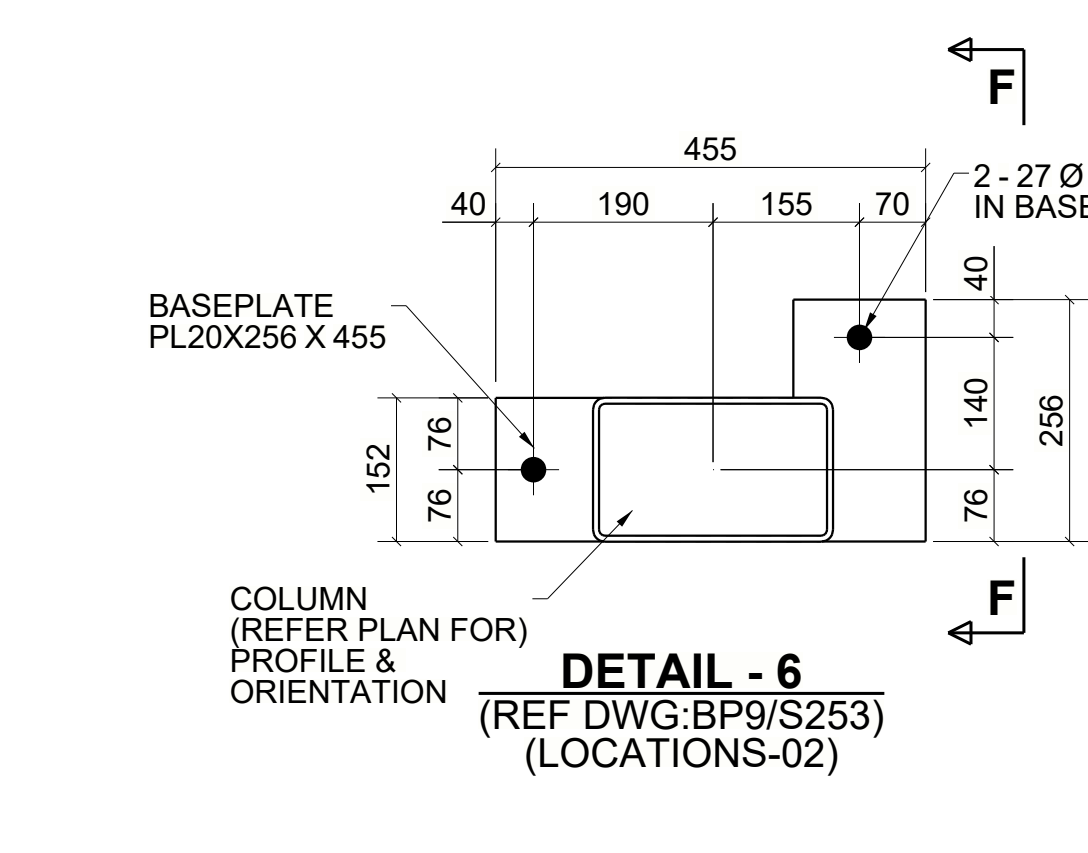
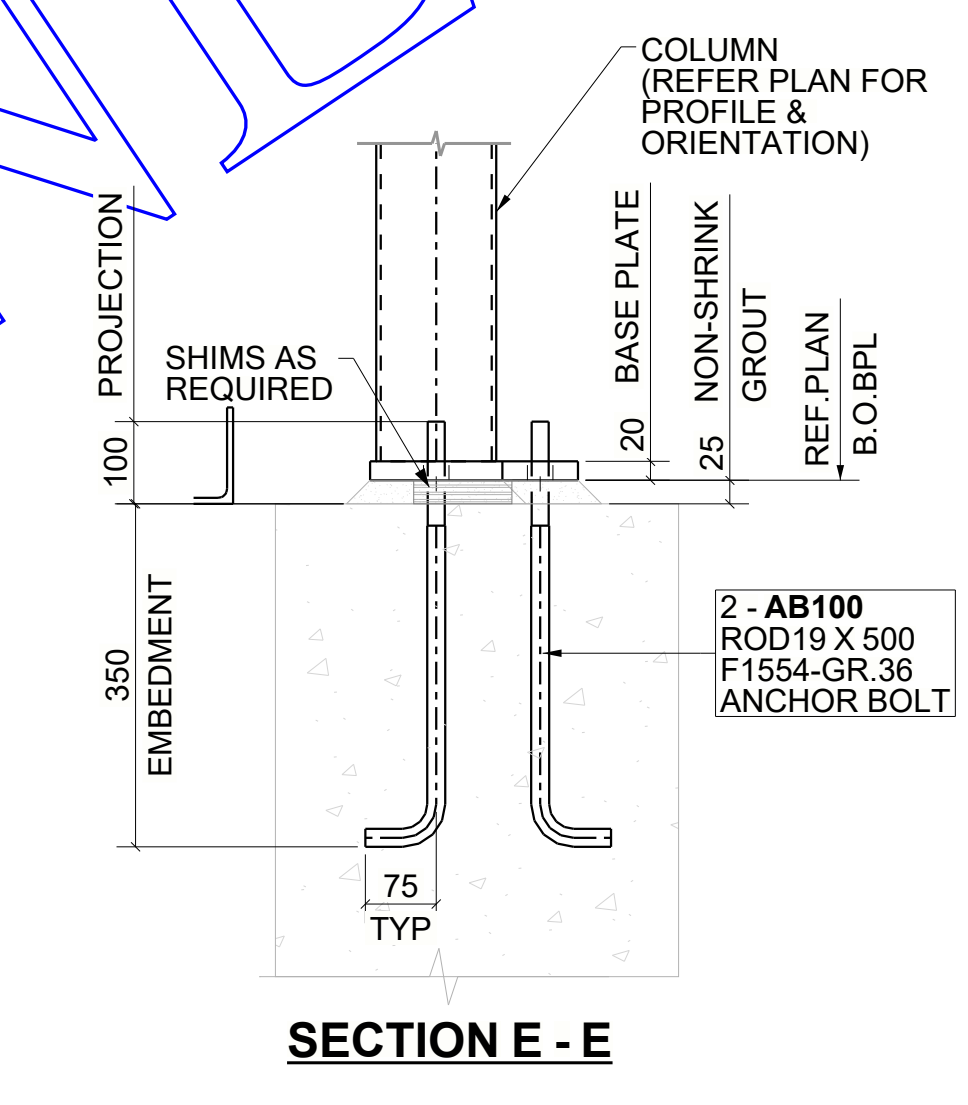
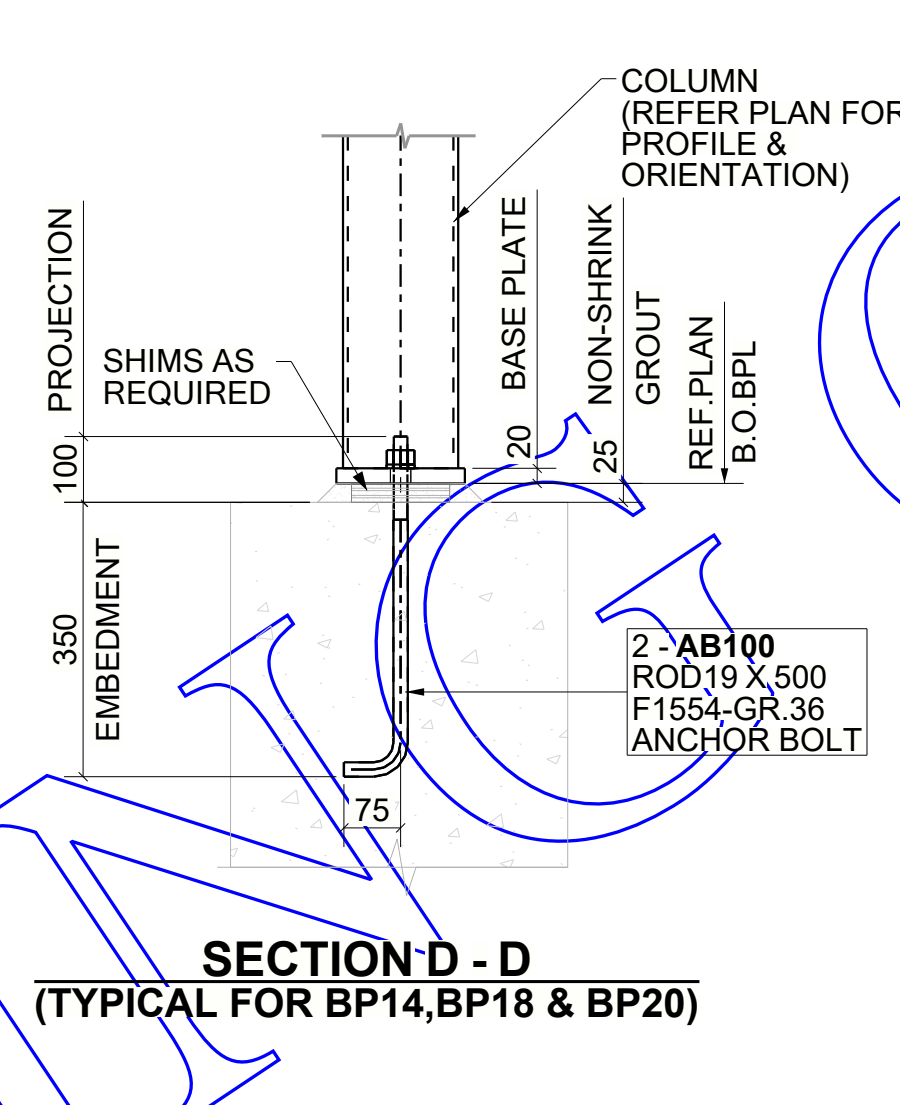
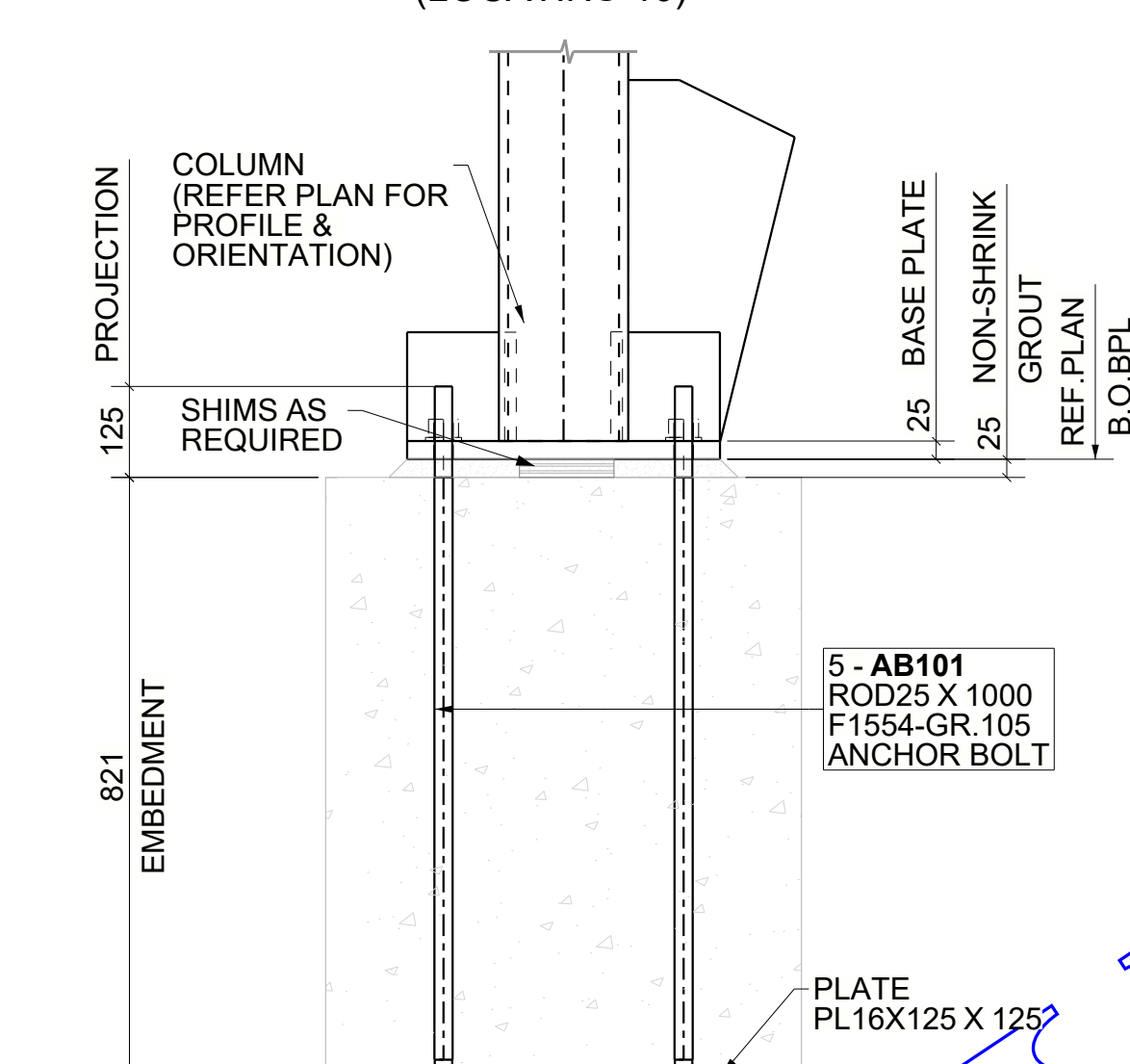
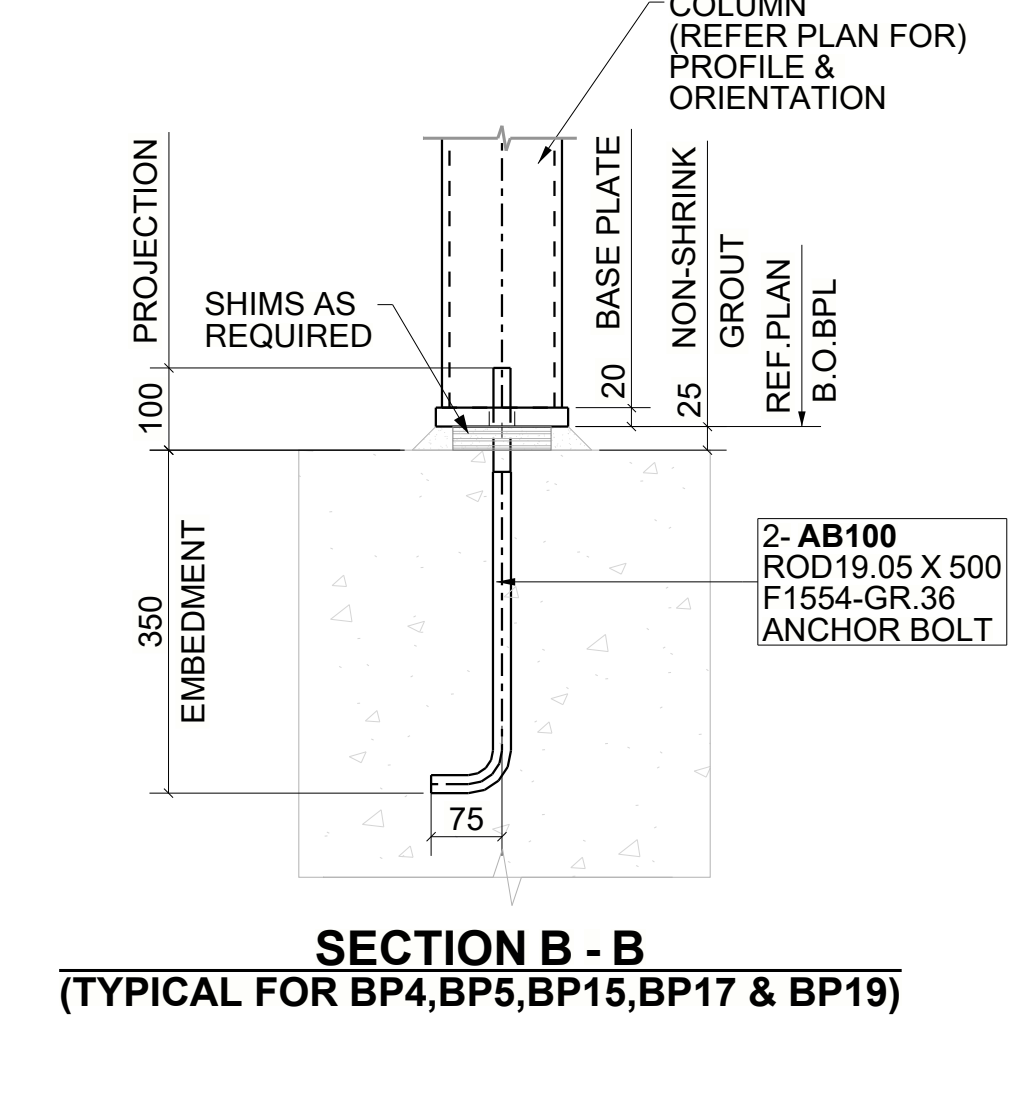
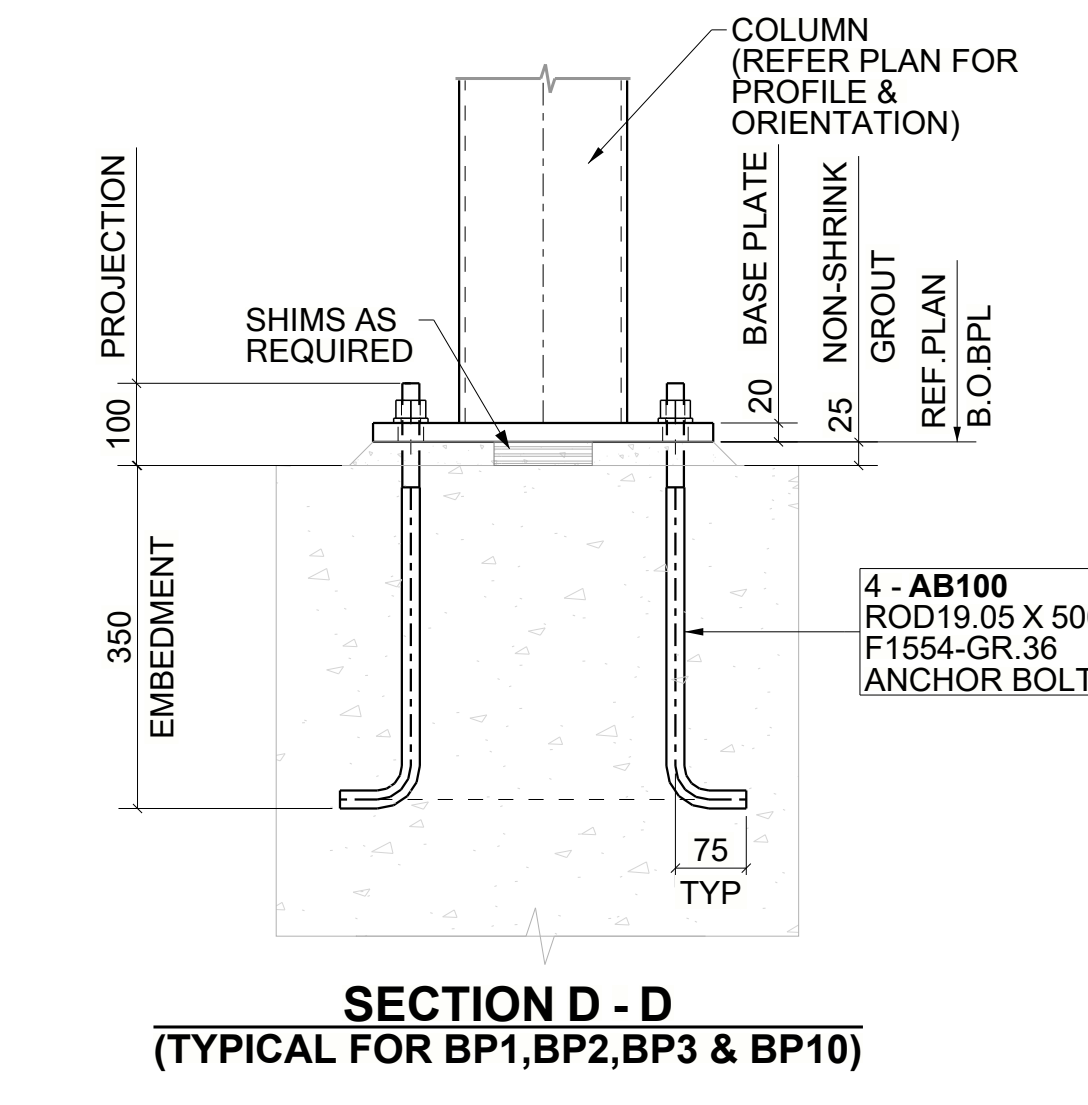
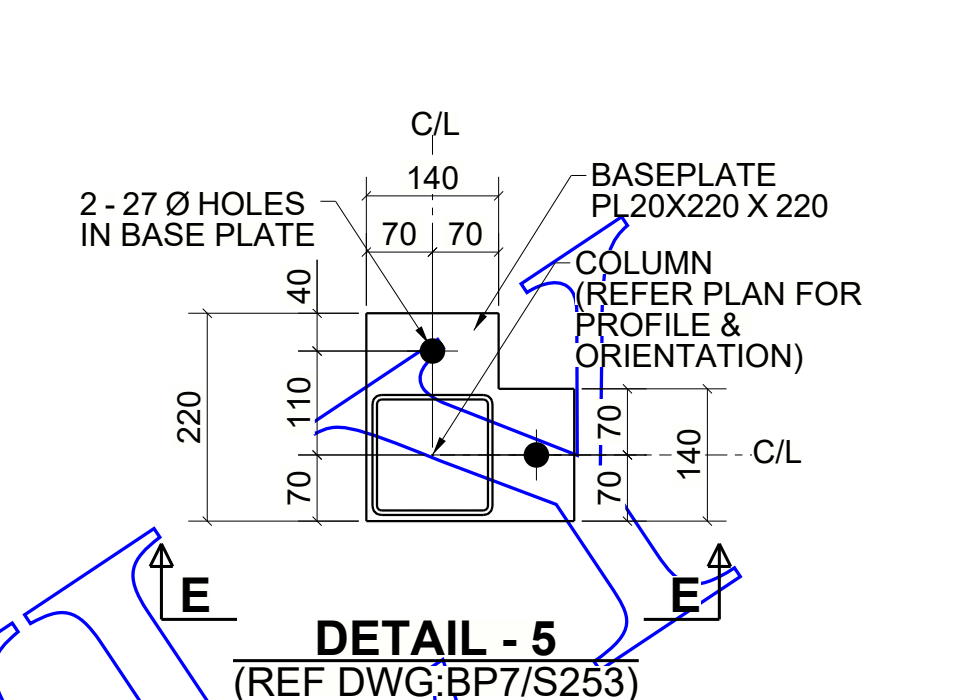
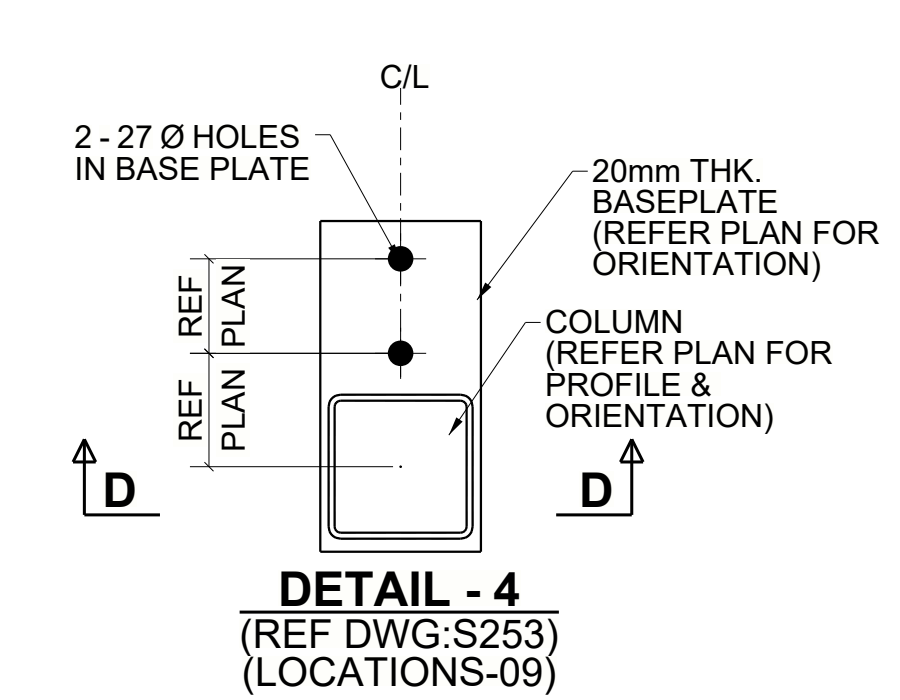
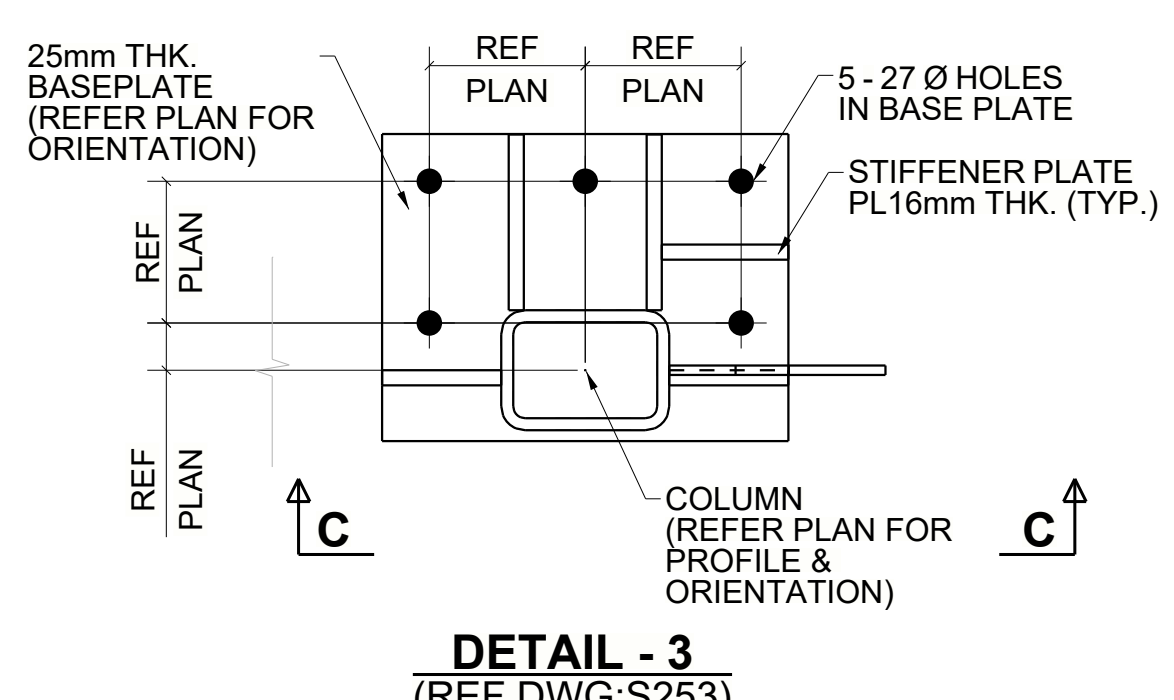
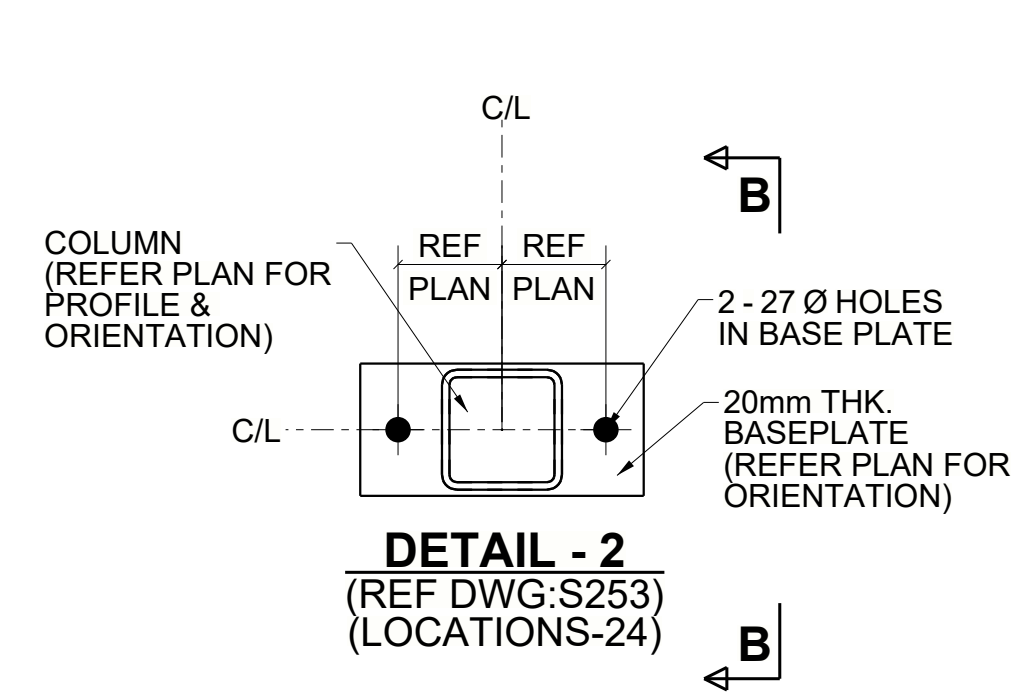
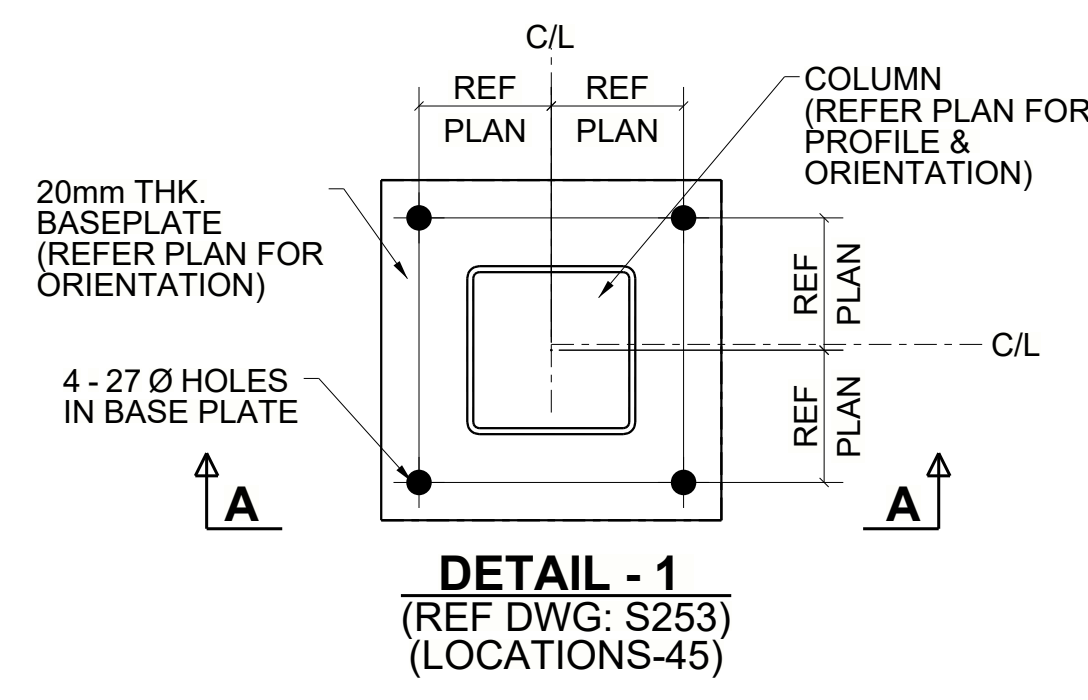


**G.C NOTE:**  
 GC TO LEAVE POCKETS TO CLEAR BRACE PLATES WHEREVER REQUIRED.

SAMPLE DRAWING

**NOTE #1:** ARCHITECT, ENGINEER & G.C. PLEASE NOTE:  
 IF NO COMMENTS APPEAR ON THIS DRAWING WHEN THE DRAWING ISSUED FOR APPROVAL / REVIEW, THEN ECOSSE WELDING.  
 WILL ASSUME THAT IT'S INTERPRETATION OF ARCHITECTURAL AND STRUCTURAL DRAWINGS IS ACCEPTABLE BY ALL PARTIES AND FABRICATION WILL PROCEED ACCORDINGLY.

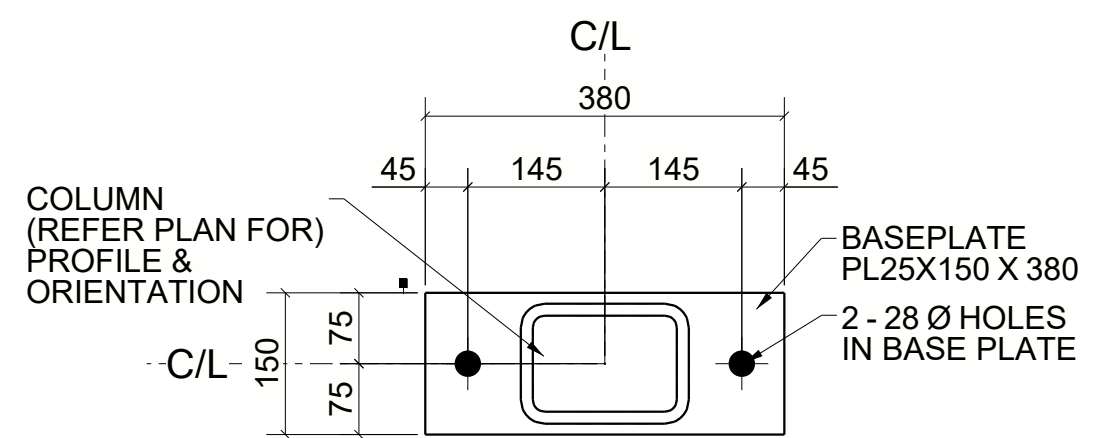
<b>PROJECT:</b>				<b>REV:</b> 0
<b>CUSTOMER:</b>				
<b>DETAIL:</b> ANCHOR BOLT SETTING PLAN FOR SEQ#04				
<b>DRAWN BY:</b> SGH	<b>CHECKED BY:</b> MAK	<b>JOB NUMBER:</b> 7000	<b>DWG NUMBER:</b> AB4	
<b>DATE:</b>	<b>PLOT DATE:</b>			



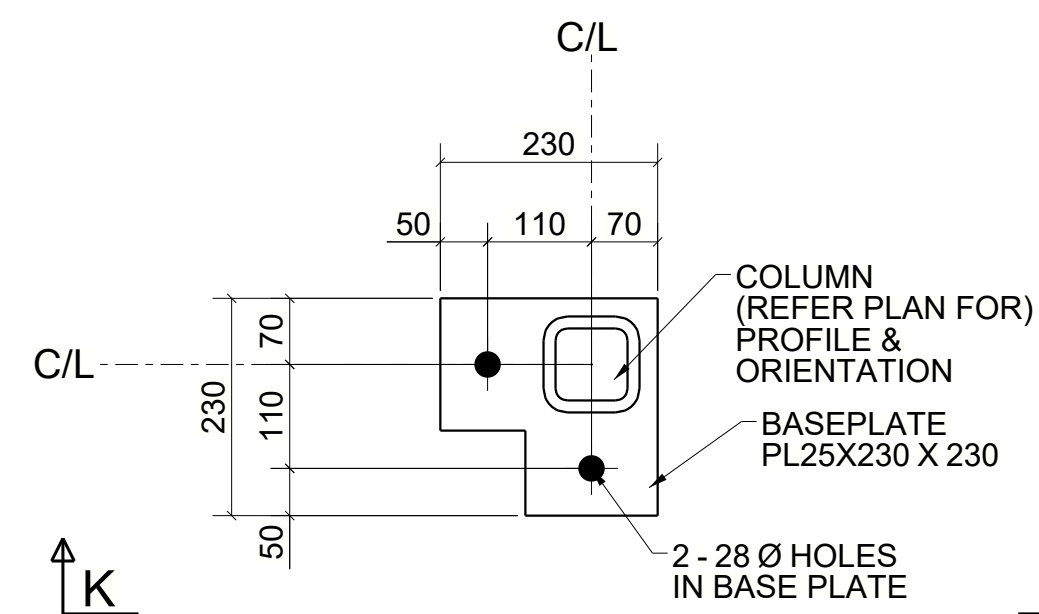
**LEGEND:-**  
B.O.BPL - BOTTOM OF BASE PLATE.

**NOTE #1:** ARCHITECT, ENGINEER & G.C. PLEASE NOTE:  
IF NO COMMENTS APPEAR ON THIS DRAWING WHEN THE DRAWING ISSUED FOR APPROVAL / REVIEW, THEN ECOSSE WELDING.  
WILL ASSUME THAT ITS INTERPRETATION OF ARCHITECTURAL AND STRUCTURAL DRAWINGS IS ACCEPTABLE BY ALL PARTIES AND FABRICATION WILL PROCEED ACCORDINGLY.

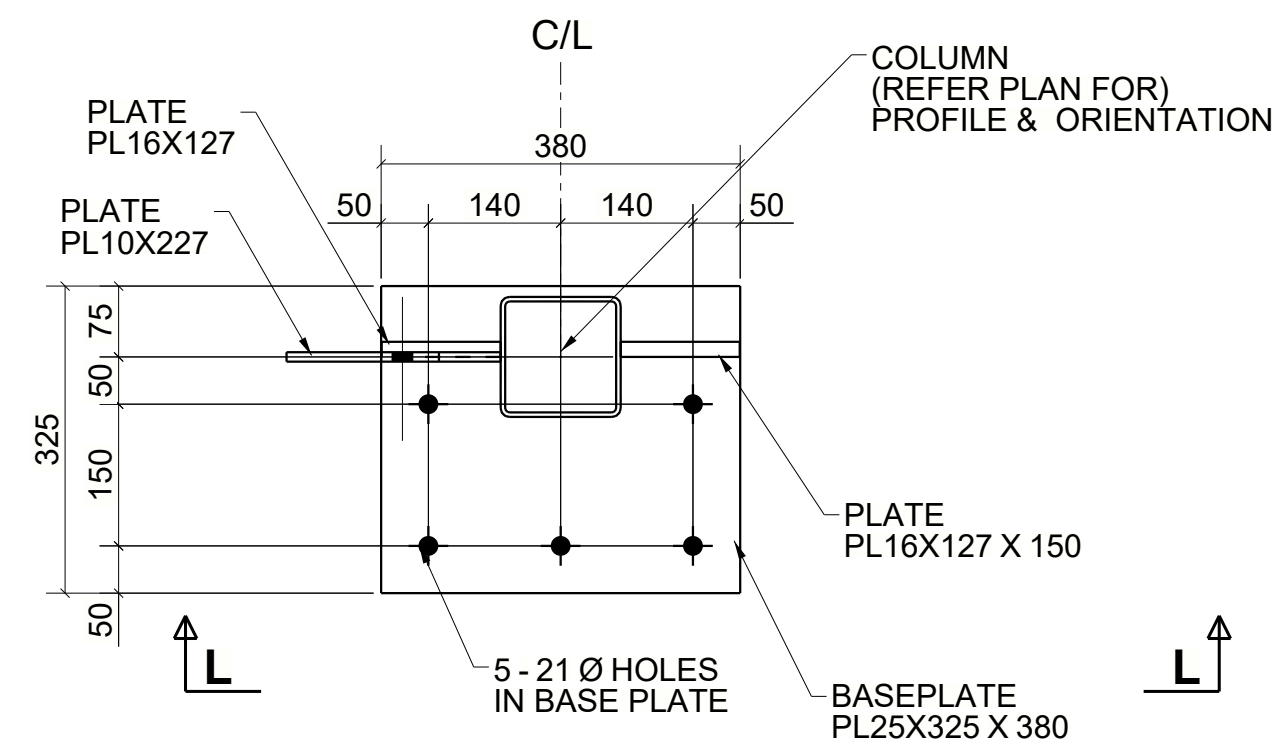
<b>PROJECT:</b>		<b>CUSTOMER:</b>		<b>REV:</b> 0
<b>DETAIL:</b> SECTIONS & DETAILS		<b>DATE:</b>		
<b>DRAWN BY:</b> SGH	<b>CHECKED BY:</b> MAK	<b>JOB NUMBER:</b> 7000	<b>DWG NUMBER:</b> AB5	



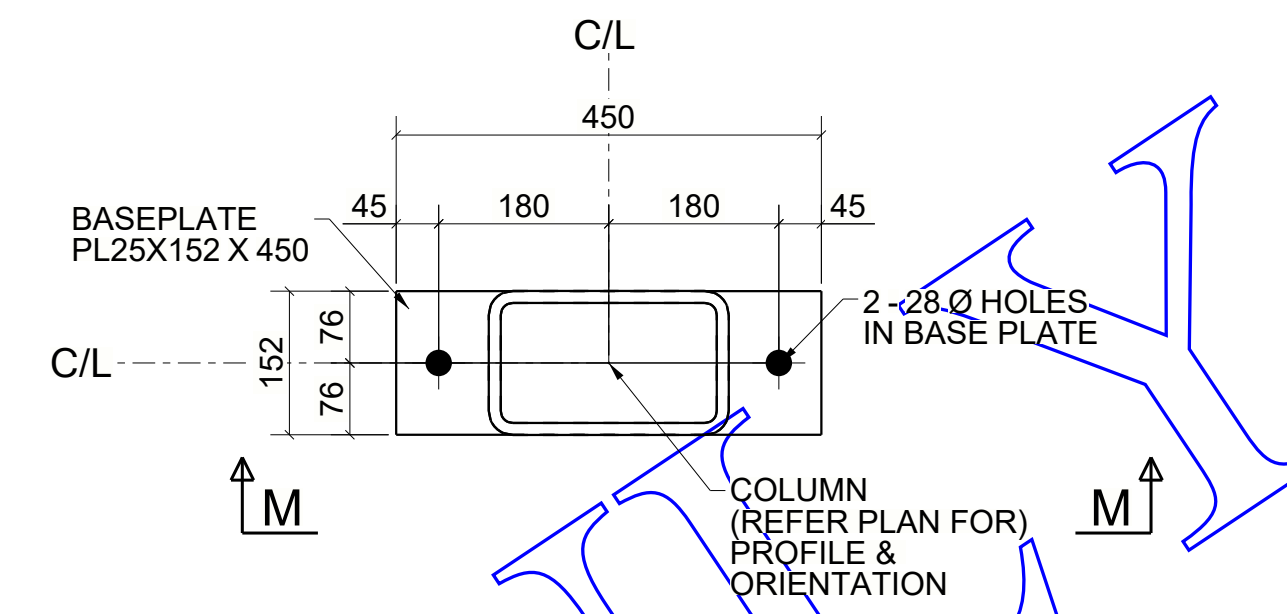
**DETAIL - 9**  
(REF DWG:BP21/S253)  
(LOCATIONS-01)



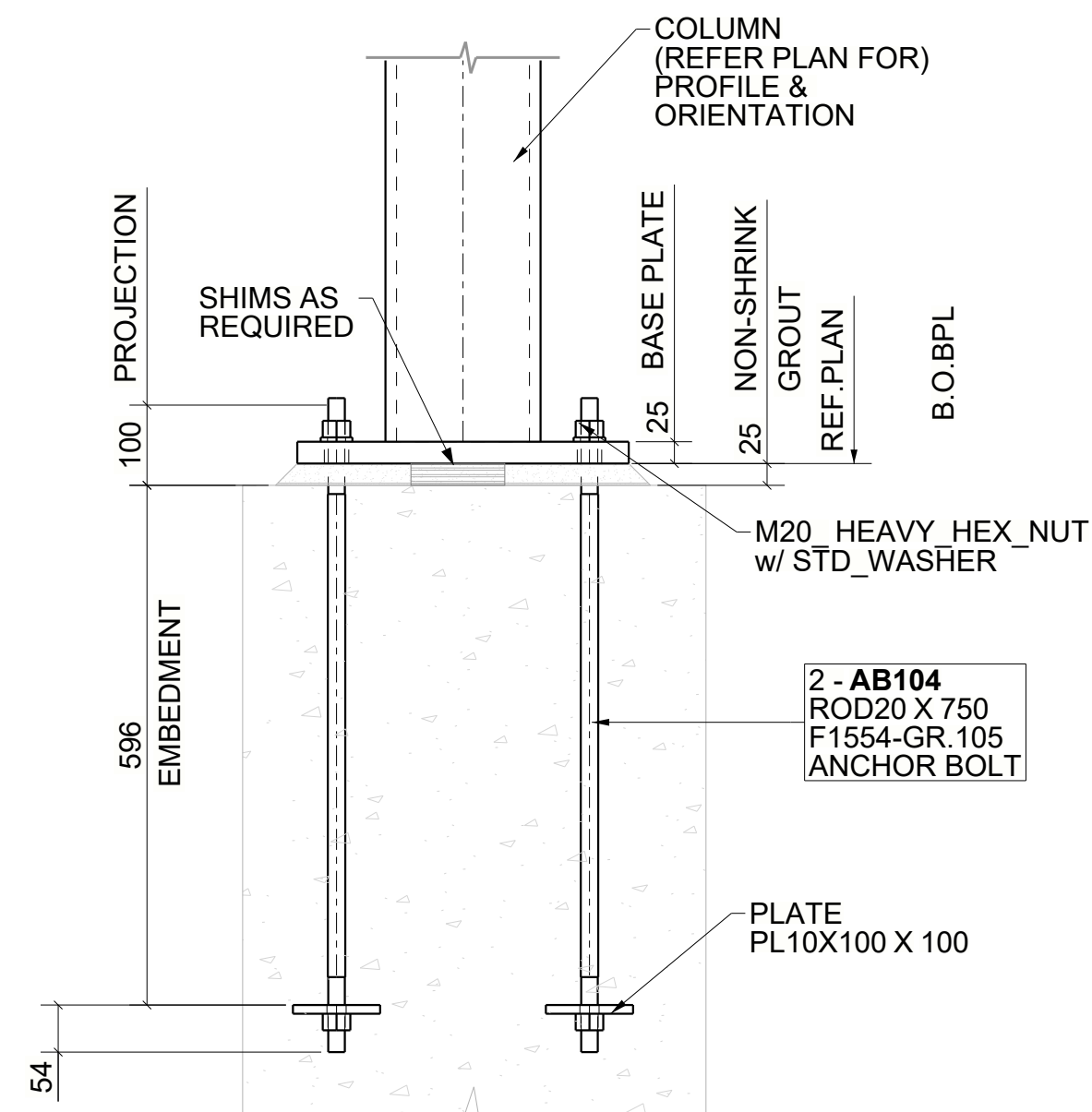
**DETAIL - 10**  
(REF DWG:(BP8/S253))  
(LOCATION-01)



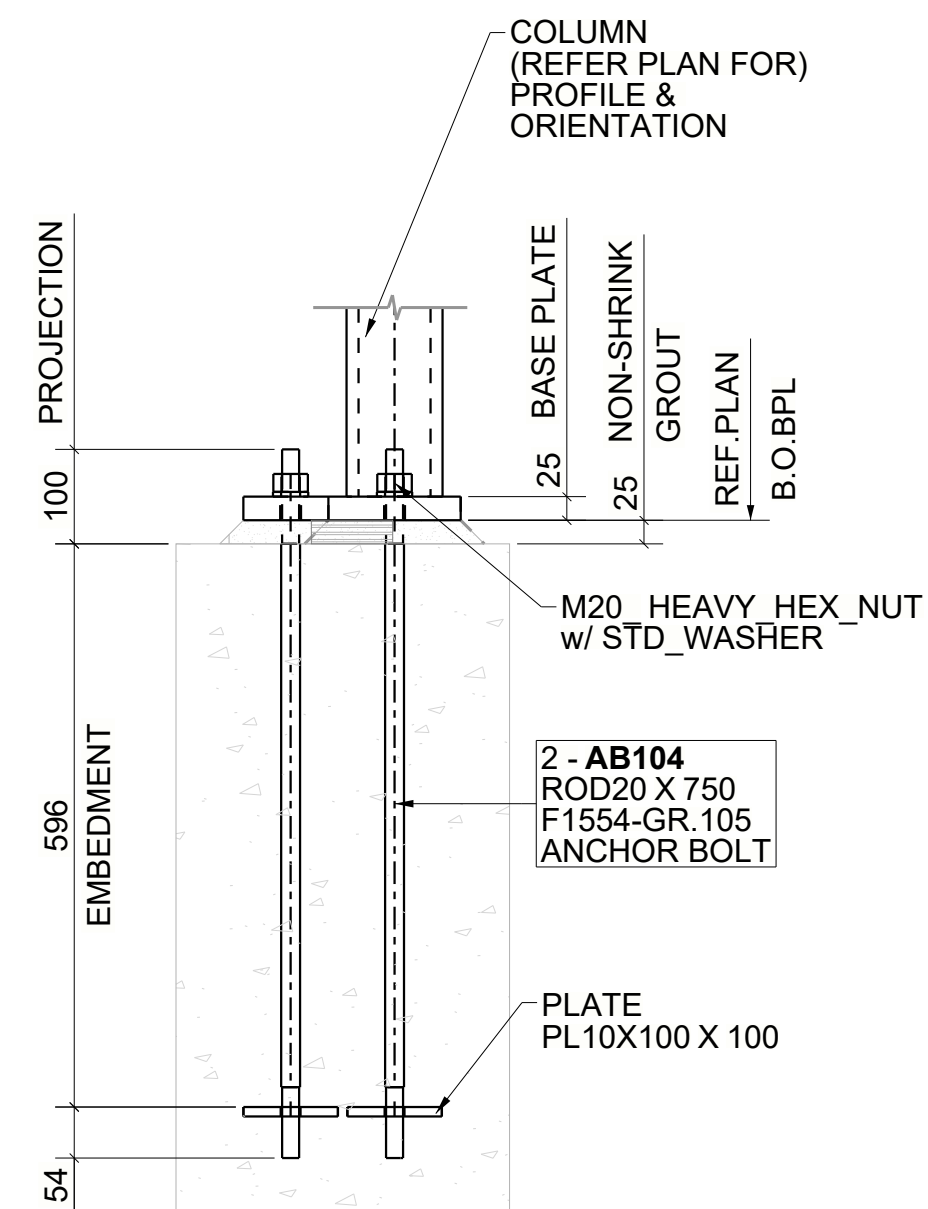
**DETAIL - 11**  
(REF DWG:(BP12/S253))  
(LOCATIONS-06)



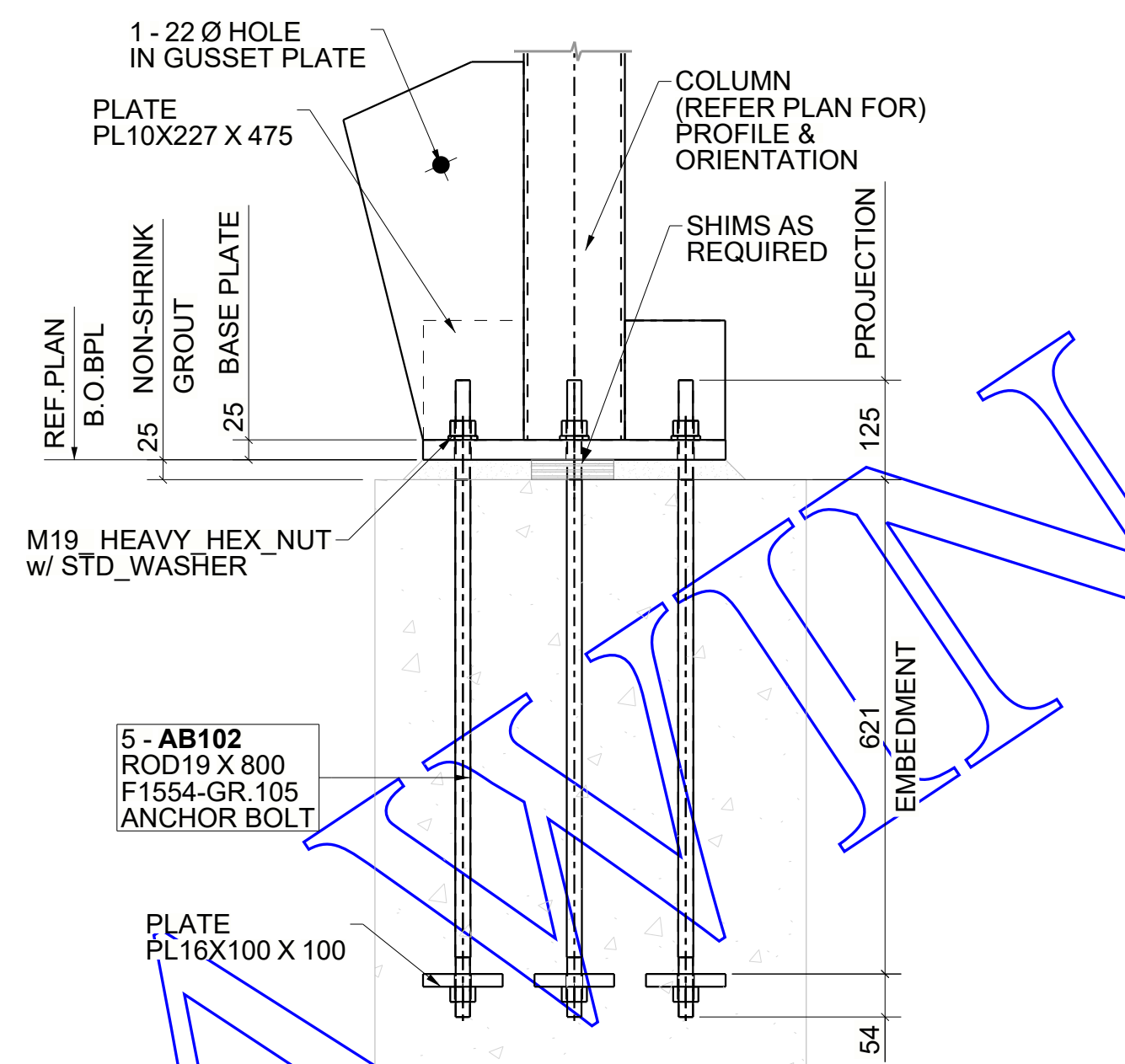
**DETAIL - 12**  
(REF DWG:(BP22/S253))  
(LOCATION-01)



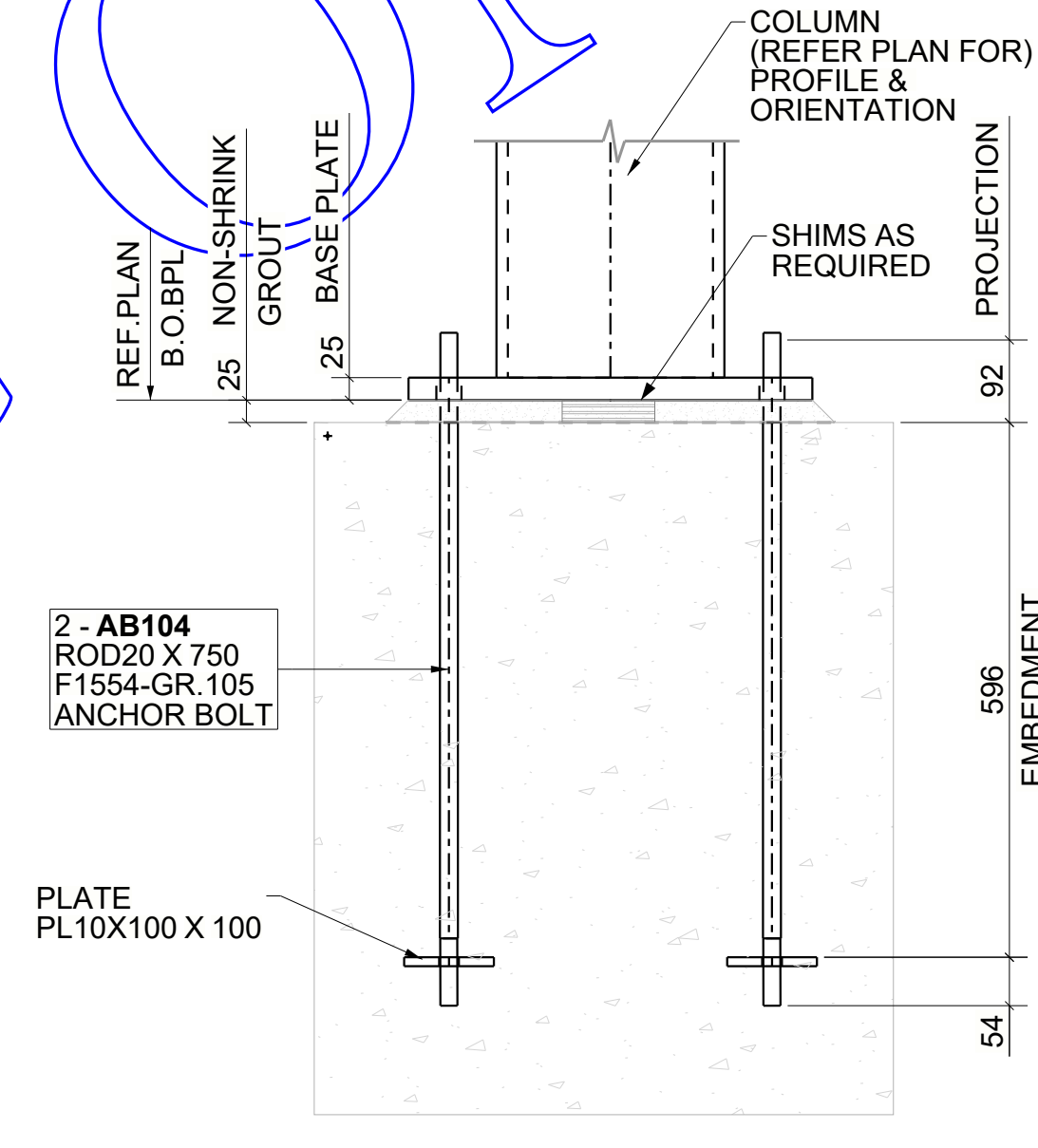
**SECTION J - J**



**SECTION K - K**



**SECTION L - L**



**SECTION M - M**

**LEGEND:-**

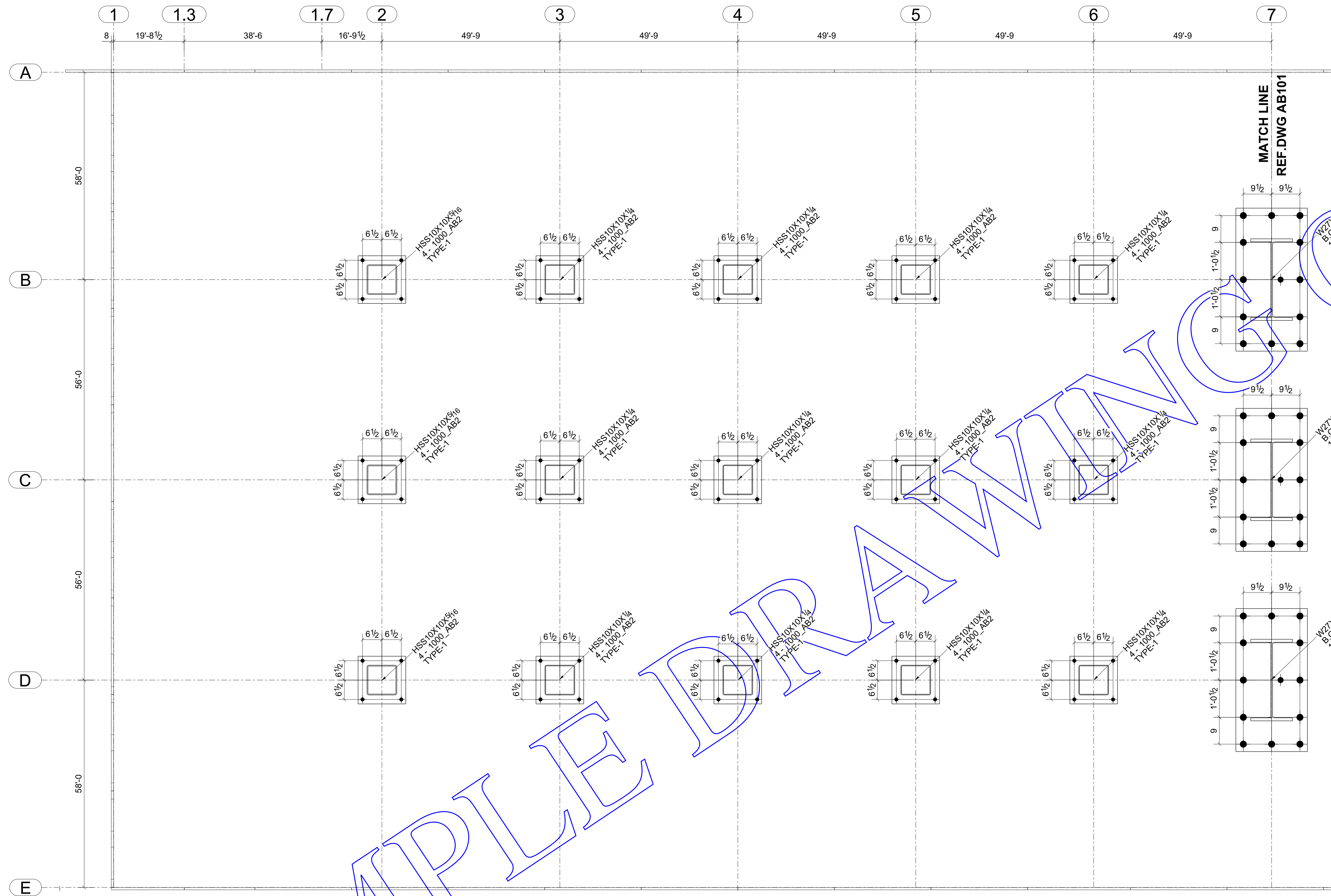
**B.O.BPL - BOTTOM OF BASE PLATE.**

SAMPLED DRAWING

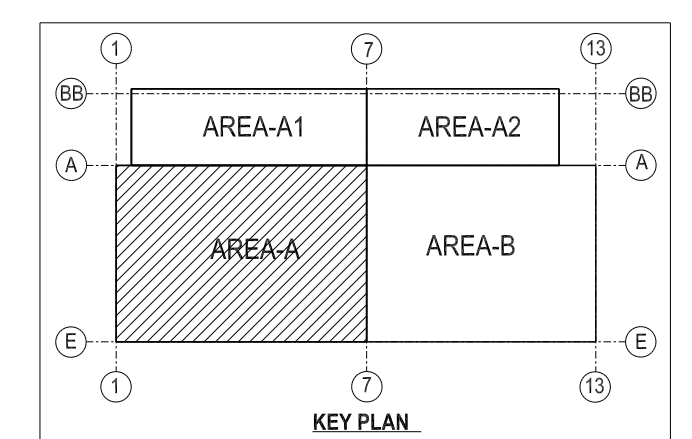
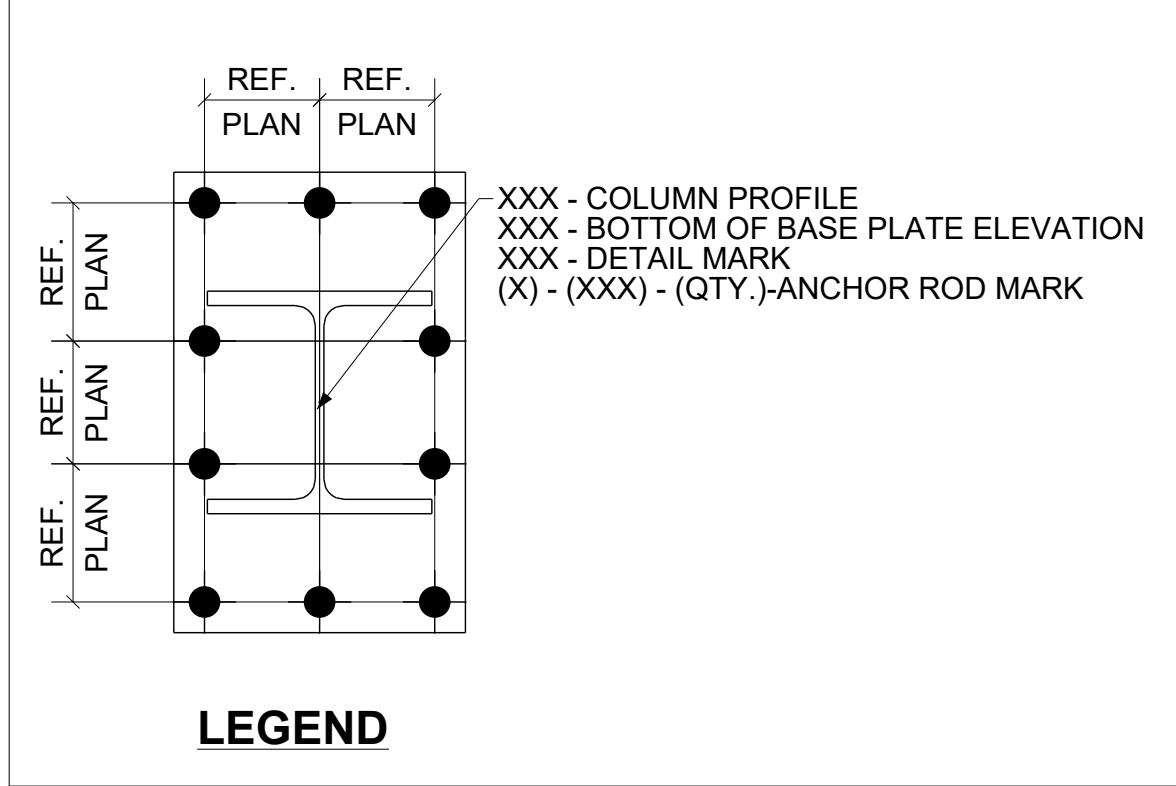
NOTE #1: ARCHITECT, ENGINEER & G.C. PLEASE NOTE:

IF NO COMMENTS APPEAR ON THIS DRAWING WHEN THE DRAWING ISSUED FOR APPROVAL / REVIEW, THEN ECOSSE WELDING.  
WILL ASSUME THAT ITS INTERPRETATION OF ARCHITECTURAL AND STRUCTURAL DRAWINGS IS ACCEPTABLE BY ALL PARTIES AND FABRICATION WILL PROCEED ACCORDINGLY.

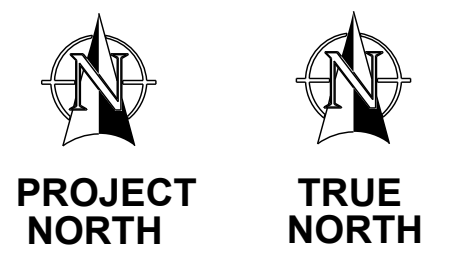
PROJECT:		CUSTOMER:		REV: 0
DETAIL: SECTIONS & DETAILS		DATE:		
DRAWN BY: SGH	CHECKED BY: MAK	JOB NUMBER: 7000	DWG NUMBER: AB6	



**LEGEND:-**  
 U.N.O - UNLESS NOTED OTHERWISE.  
 B.O.BPL - BOTTOM OF BASE PLATE.  
 PCMK - PIECE MARK



**PARTIAL ANCHOR BOLT SETTING PLAN FOR AREA A**  
 (BOTTOM OF BASE PLATE ELEVATION : 99'-1 1/2" (U.N.O))  
 (REF. DWG: S1.01A)



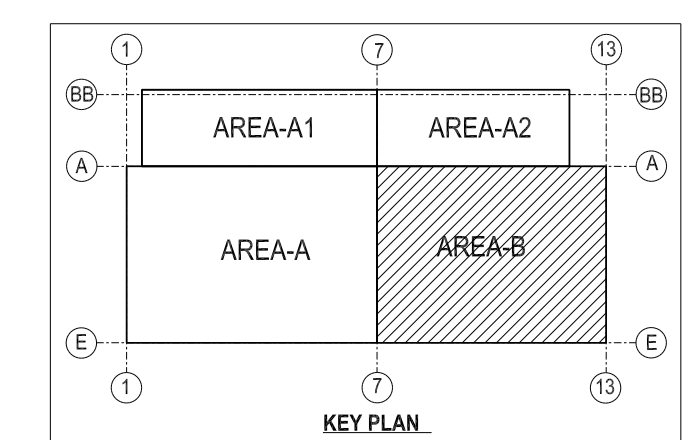
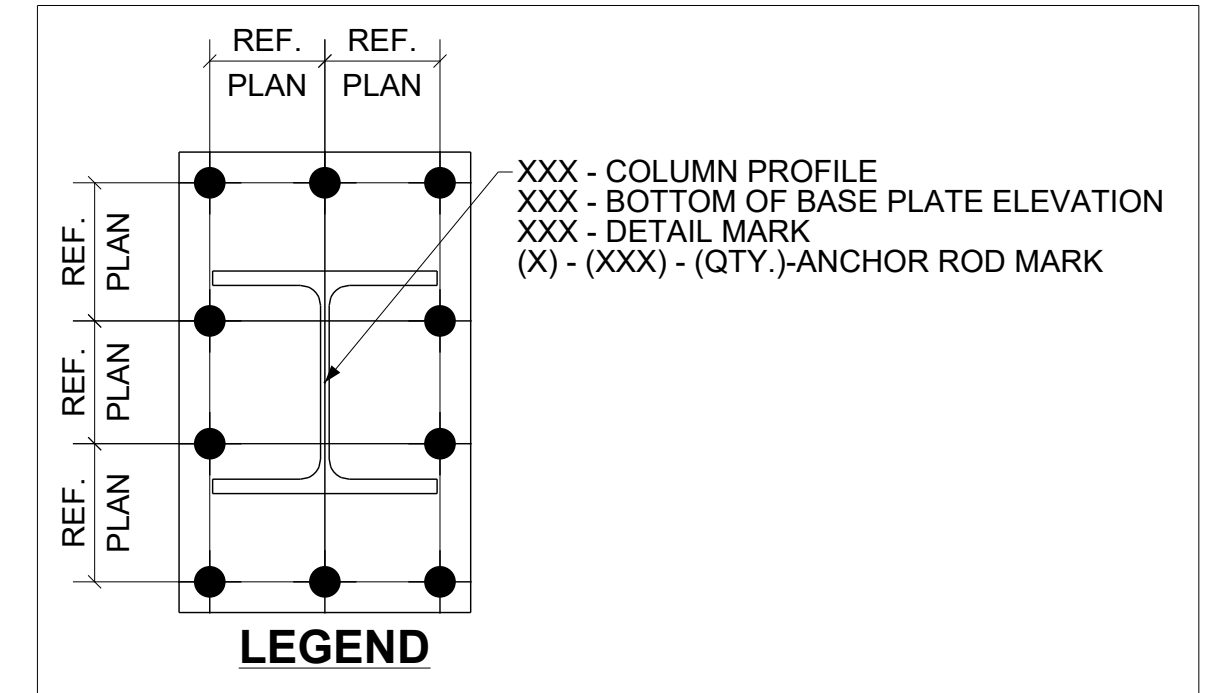
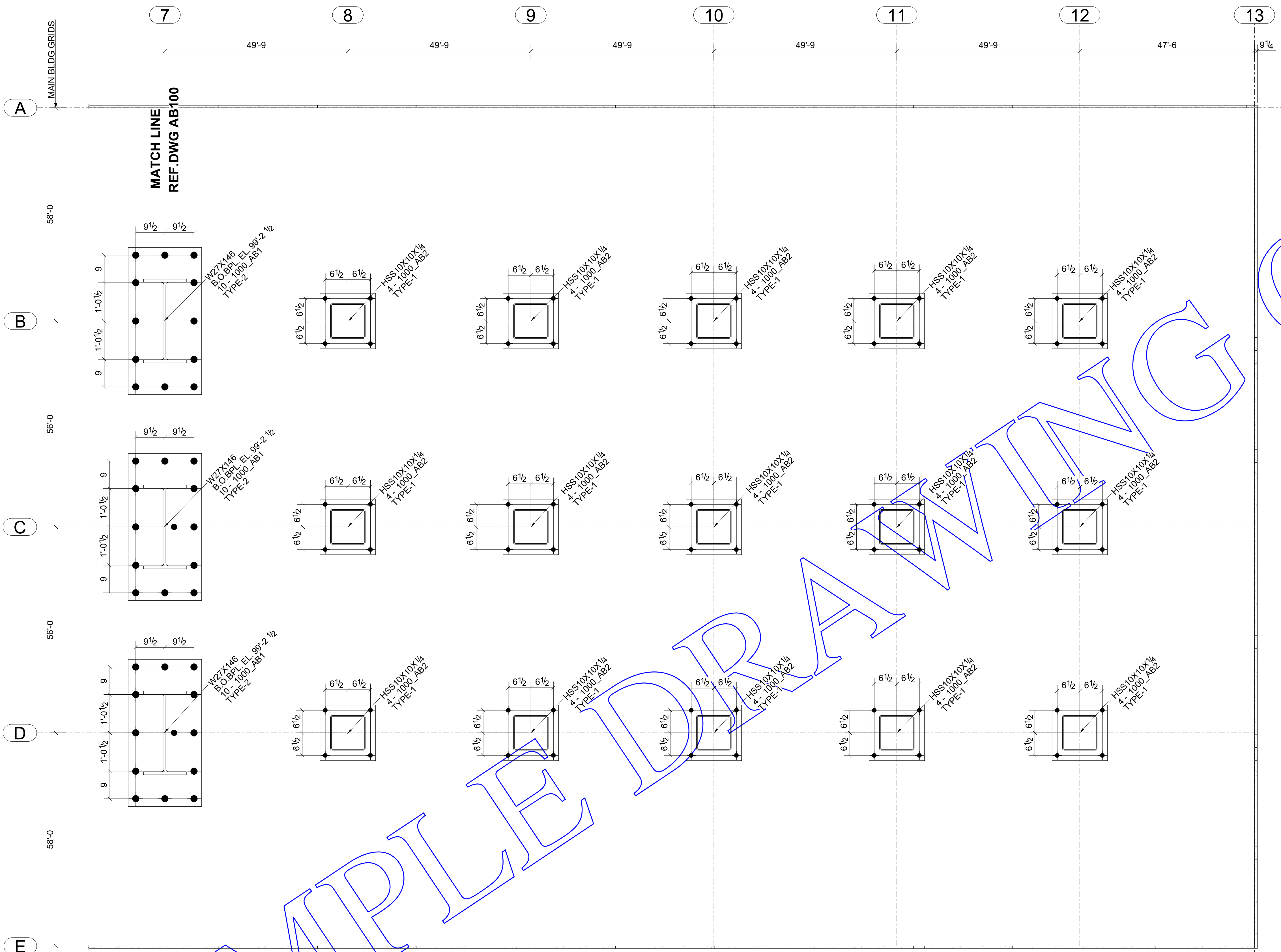
- ALL MATERIAL TO BE A36 UNLESS NOTED
- ALL TUBES TO BE A500-GRC (Fy=50) UNLESS NOTED
- ALL PIPES TO BE A53-GRB UNLESS NOTED
- ALL HS SHOP BOLTS TO BE TORQUED UNLESS NOTED
- ALL RUNNING DIMENSIONS FROM END OF MAIN MATERIAL
- ALL SHOP WELDS TO BE E70XX-LH ELECTRODES
- ALL COPES TO BE RADUSED
- ALL BEAMS TO BE FABRICATED WITH RESIDUAL CAMBER UP
- MEMBERS ARE TO BE ERECTED SO THAT MARKED END IS IN SAME LOCATION AS ON ERECTION DRAWING

DETAILS OF : PARTIAL ANCHOR BOLT PLAN FOR AREA A REF. DWG. NO : S1.01A

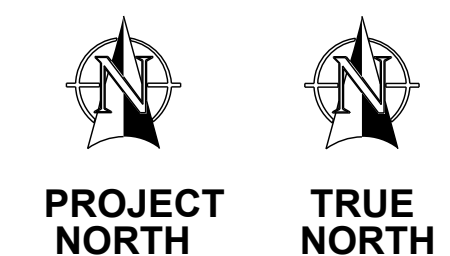
FOR TYPICAL SECTIONS AND DETAILS REFER SHEET AB102

DATE:	USE	DRAW BY: SAM	TEKLA VERSION: 21.1	DRAW BY: SAM	CHECKED BY: MAK	CONNECTIONS					DWG. NO.	JOB NO.
					DATE:	3/4 Ø A325					AB100	20-1044
						UNLESS NOTED	NO.	DATE	BY	REVISIONS		





**PARTIAL ANCHOR BOLT SETTING PLAN FOR AREA B**  
 (BOTTOM OF BASE PLATE ELEVATION : 99'-1 1/2" (U.N.O))  
 (REF. DWG: 1/S1.01B)

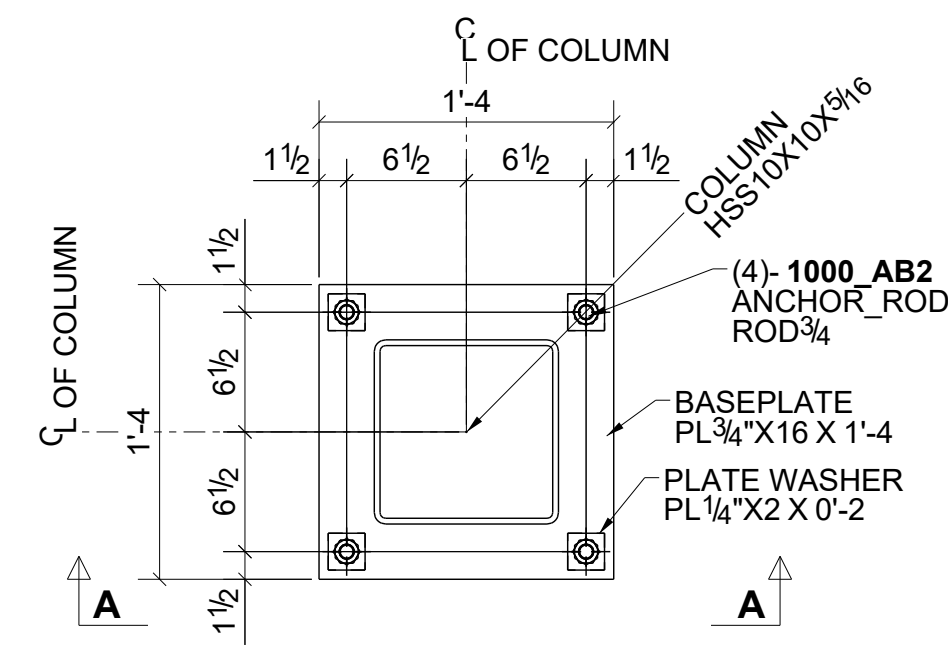


- ALL MATERIAL TO BE A36 UNLESS NOTED
- ALL TUBES TO BE A500-GRC (Fy=50) UNLESS NOTED
- ALL PIPES TO BE A53-GRB UNLESS NOTED
- ALL HS SHOP BOLTS TO BE TORQUED UNLESS NOTED
- ALL RUNNING DIMENSIONS FROM END OF MAIN MATERIAL
- ALL SHOP WELDS TO BE E70XX-LH ELECTRODES
- ALL COPIES TO BE RADUSED
- ALL BEAMS TO BE FABRICATED WITH RESIDUAL CAMBER UP
- MEMBERS ARE TO BE ERECTED SO THAT MARKED END IS IN SAME LOCATION AS ON ERECTION DRAWING

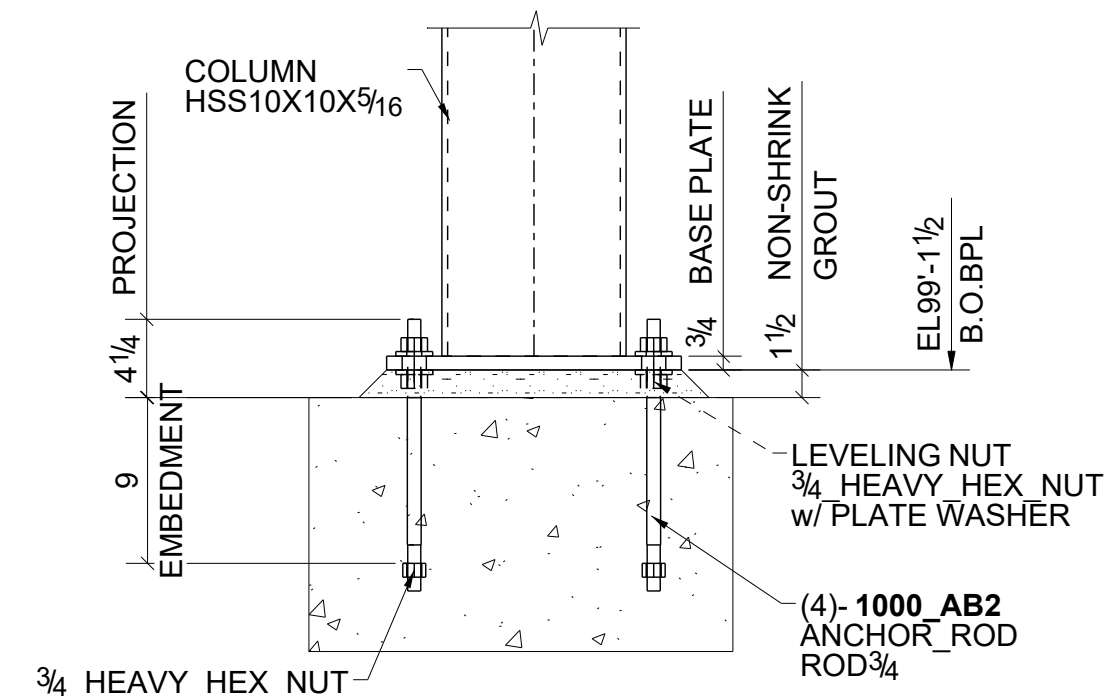
DETAILS OF : PARTIAL ANCHOR BOLT PLAN FOR AREA B REF. DWG. NO : S1.01B

FOR TYPICAL SECTIONS AND DETAILS REFER SHEET AB102

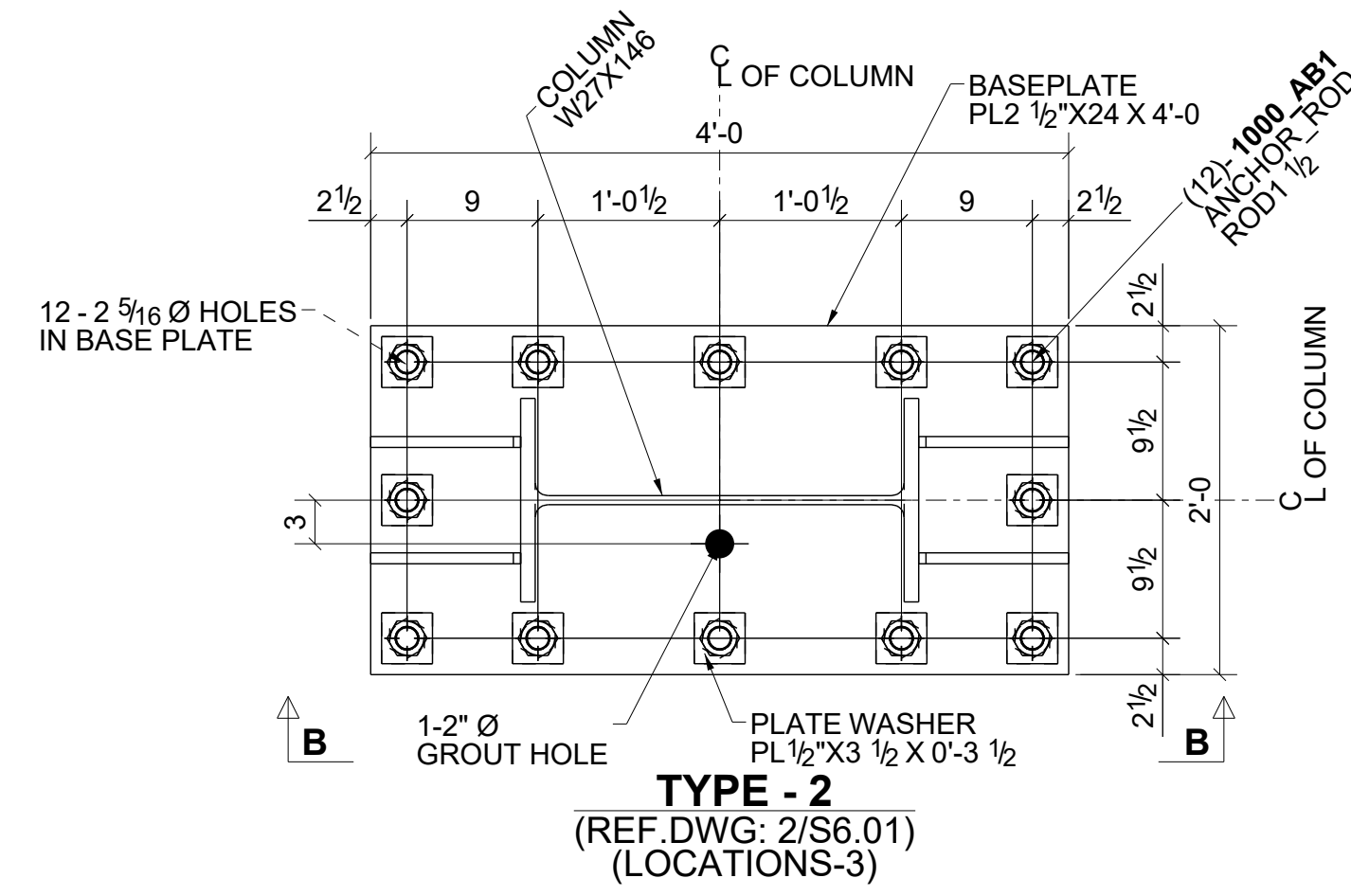
DATE:	USE	DRAW BY: SAM	TEKLA VERSION: 21.1	DRAW BY: SAM	CHECKED BY: MAK	CONNECTIONS	DWG. NO.	JOB NO.
				DATE:	DATE:	3/4 Ø A325	AB101	20-1044
						UNLESS NOTED		



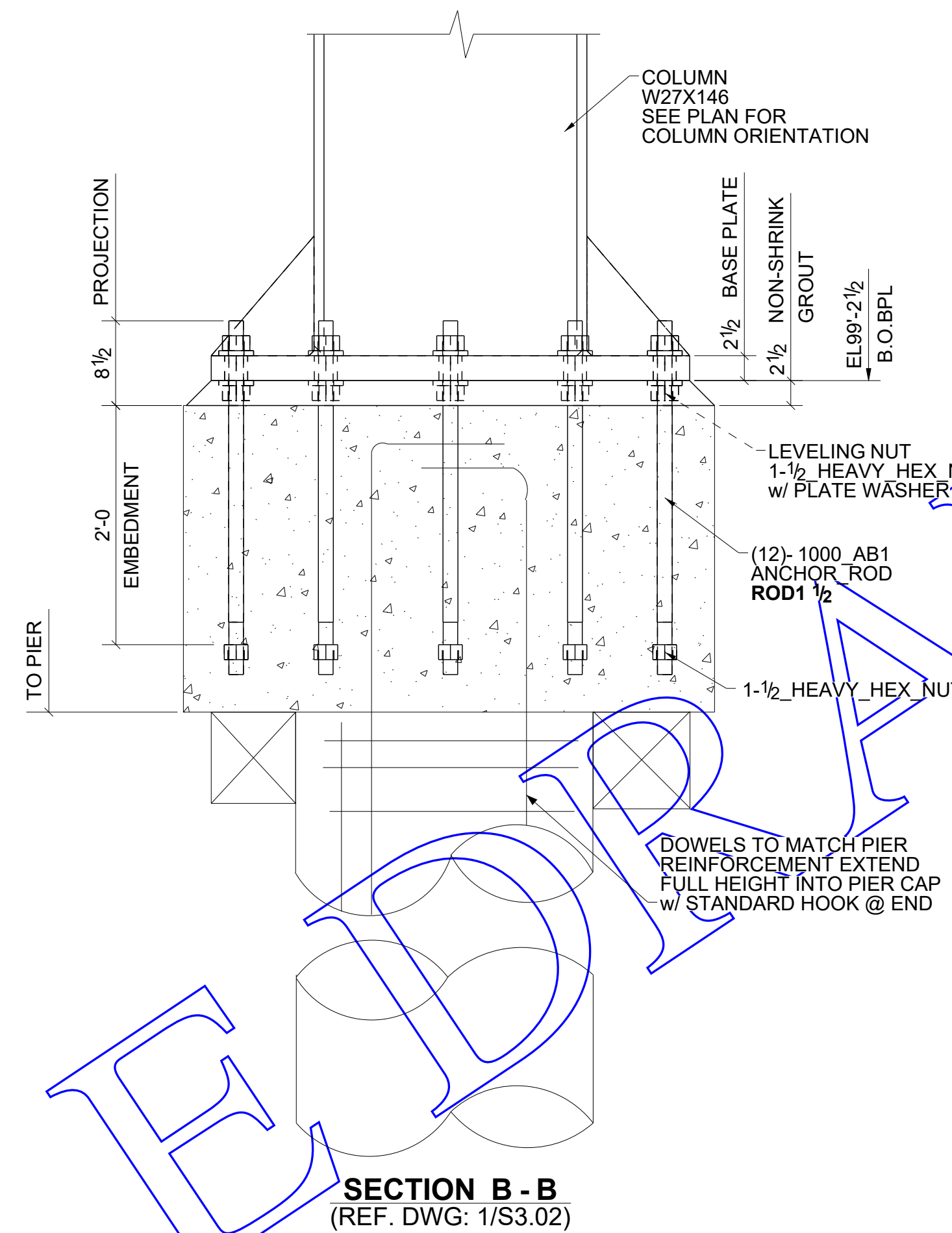
**DETAIL-2**  
(REF. DWG: 2/S6.01)  
(LOCATIONS-30)



**SECTION A - A**  
(REF. DWG: 2/S3.01)



**TYPE - 2**  
(REF. DWG: 2/S6.01)  
(LOCATIONS-3)



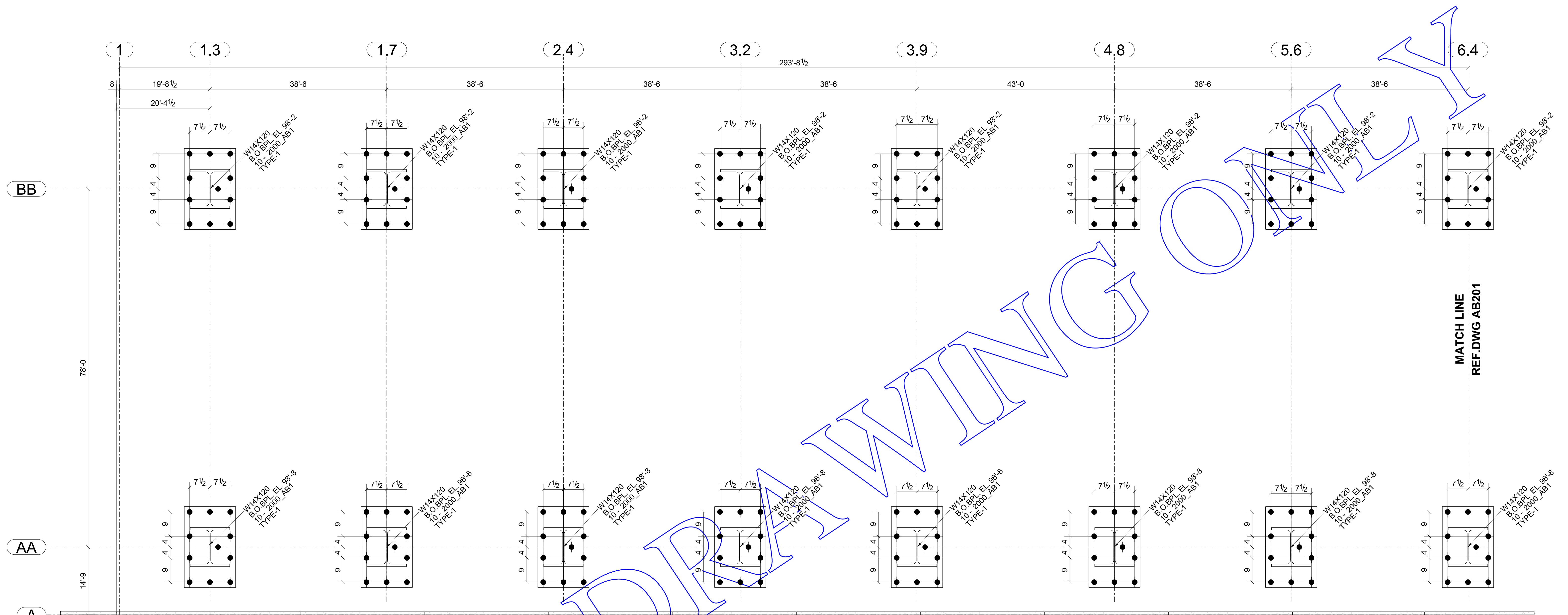
**SECTION B - B**  
(REF. DWG: 1/S3.02)

- ALL MATERIAL TO BE A36 UNLESS NOTED
- ALL TUBES TO BE A500-GRC (Fy=50) UNLESS NOTED
- ALL PIPES TO BE A53-GRB UNLESS NOTED
- ALL HS SHOP BOLTS TO BE TORQUED UNLESS NOTED
- ALL RUNNING DIMENSIONS FROM END OF MAIN MATERIAL
- ALL SHOP WELDS TO BE E70XX-LH ELECTRODES
- ALL COPIES TO BE RADIUS
- ALL BEAMS TO BE FABRICATED WITH RESIDUAL CAMBER UP
- MEMBERS ARE TO BE ERECTED SO THAT MARKED END IS IN SAME LOCATION AS ON ERECTION DRAWING

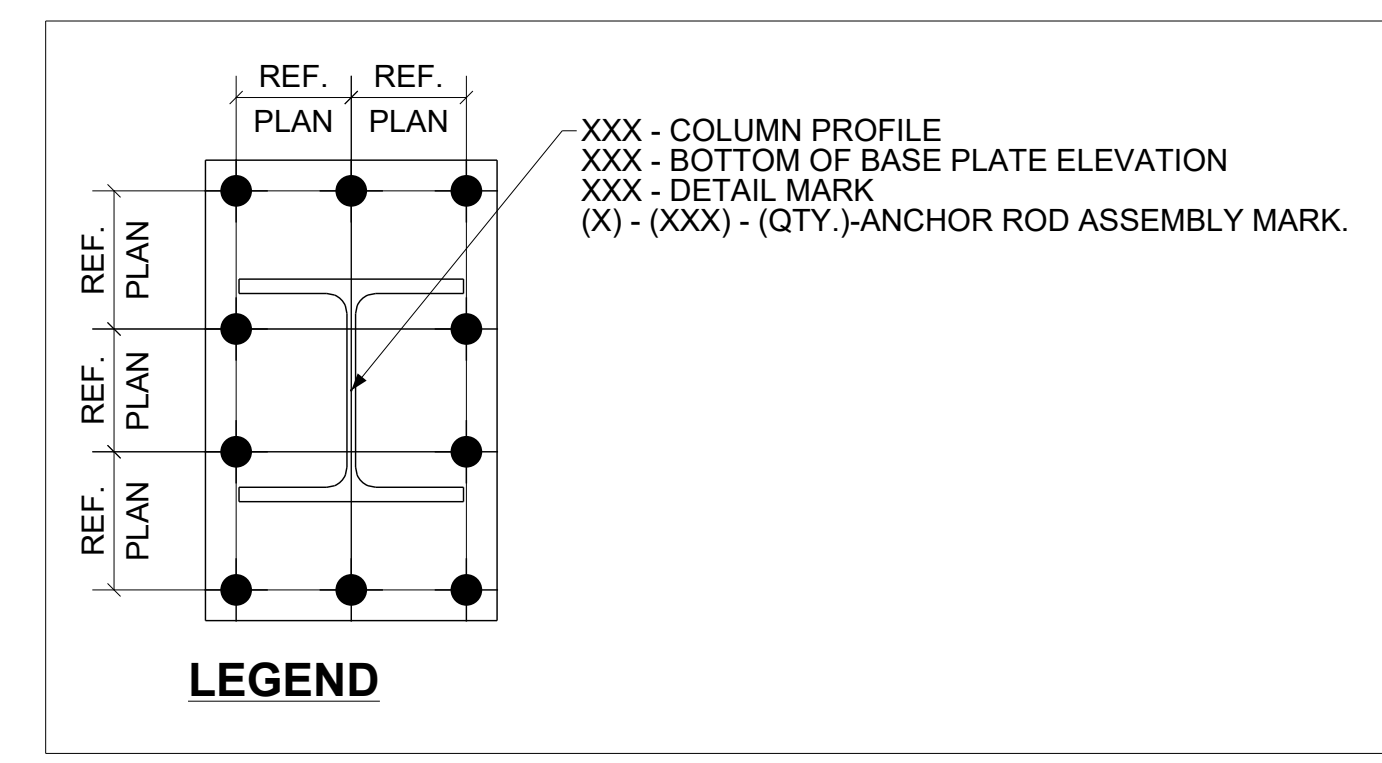
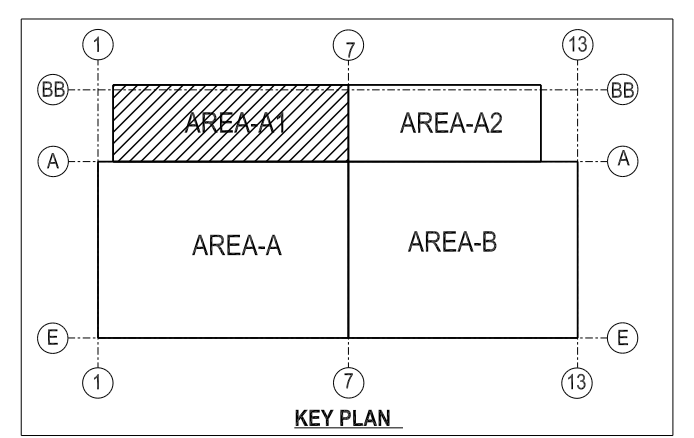
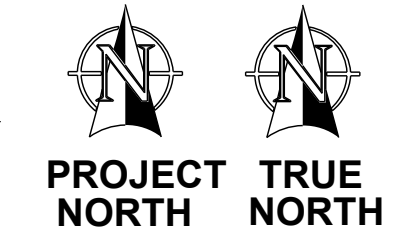
DETAILS OF : ANCHOT BOLT SECTIONS & DETAILS REF. DWG. NO : S3.01, S3.02 & S6.01

FOR PLANS REFER AB100 & AB101

DATE:	USE	DRAW BY: SAM	TEKLA VERSION: 21.1	DRAW BY: SAM	CHECKED BY: MAK	CONNECTIONS	DWG. NO.	JOB NO.
				DATE:	DATE:	3/4 Ø A325	AB102	20-1044
						UNLESS NOTED		



**PARTIAL ANCHOR BOLT SETTING PLAN FOR CANOPY (AREA A1)**  
(REF.DWG: 1/S1.02)

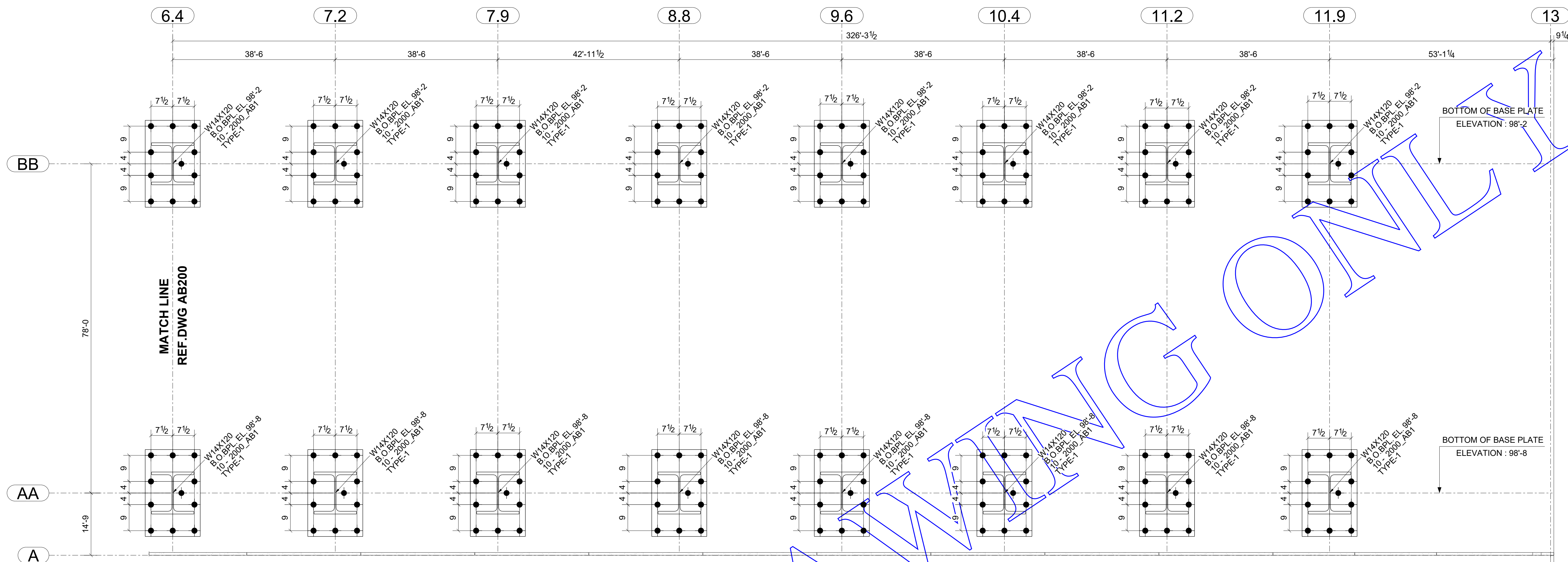


- ALL MATERIAL TO BE A36 UNLESS NOTED
- ALL TUBES TO BE A500-GRC (Fy=50) UNLESS NOTED
- ALL PIPES TO BE A53-GRB UNLESS NOTED
- ALL HS SHOP BOLTS TO BE TORQUED UNLESS NOTED
- ALL RUNNING DIMENSIONS FROM END OF MAIN MATERIAL
- ALL SHOP WELDS TO BE E70XX-LH ELECTRODES
- ALL COPIES TO BE RADUSED
- ALL BEAMS TO BE FABRICATED WITH RESIDUAL CAMBER UP
- MEMBERS ARE TO BE ERECTED SO THAT MARKED END IS IN SAME LOCATION AS ON ERECTION DRAWING

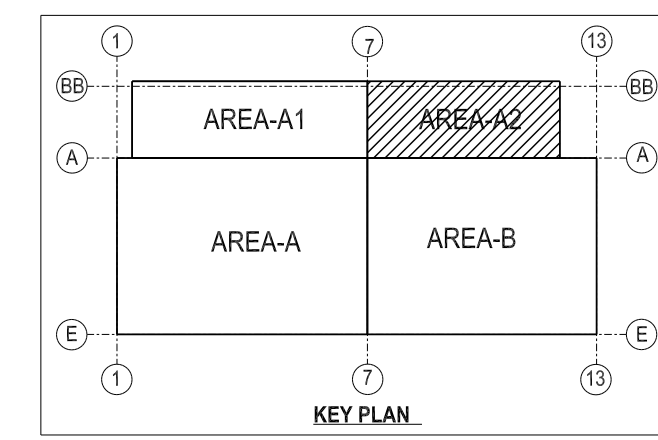
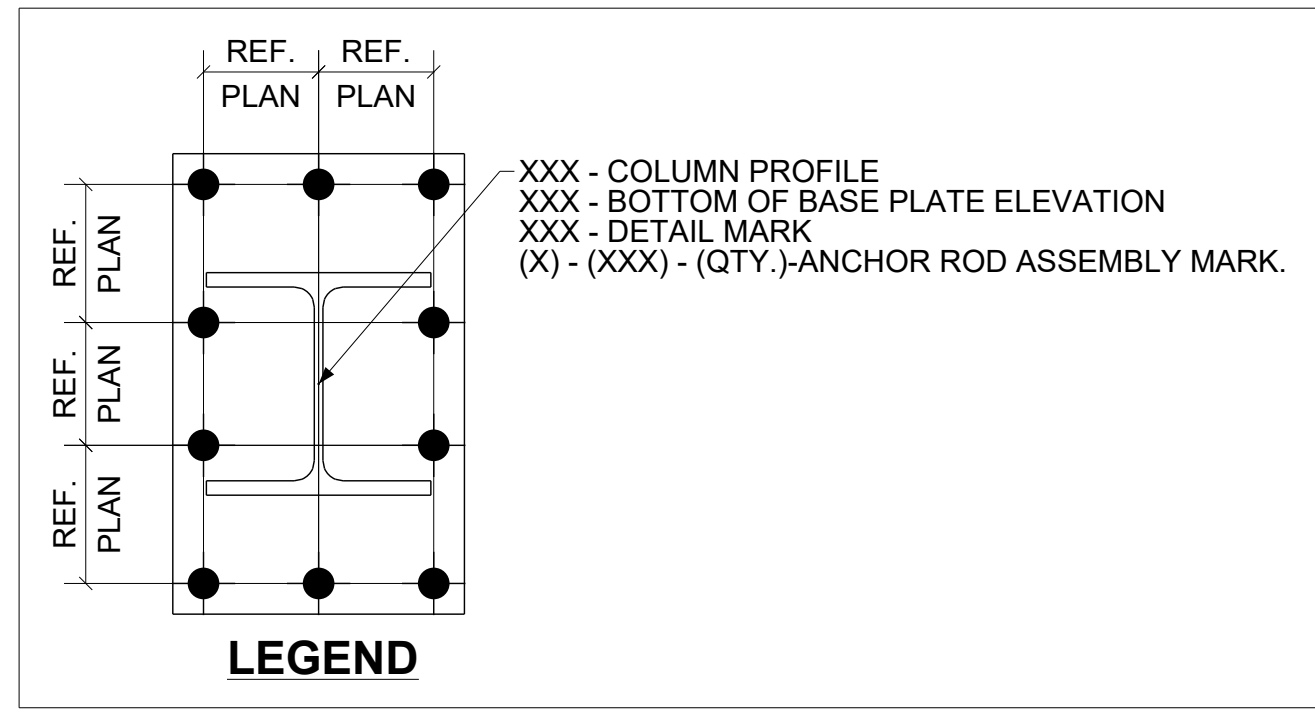
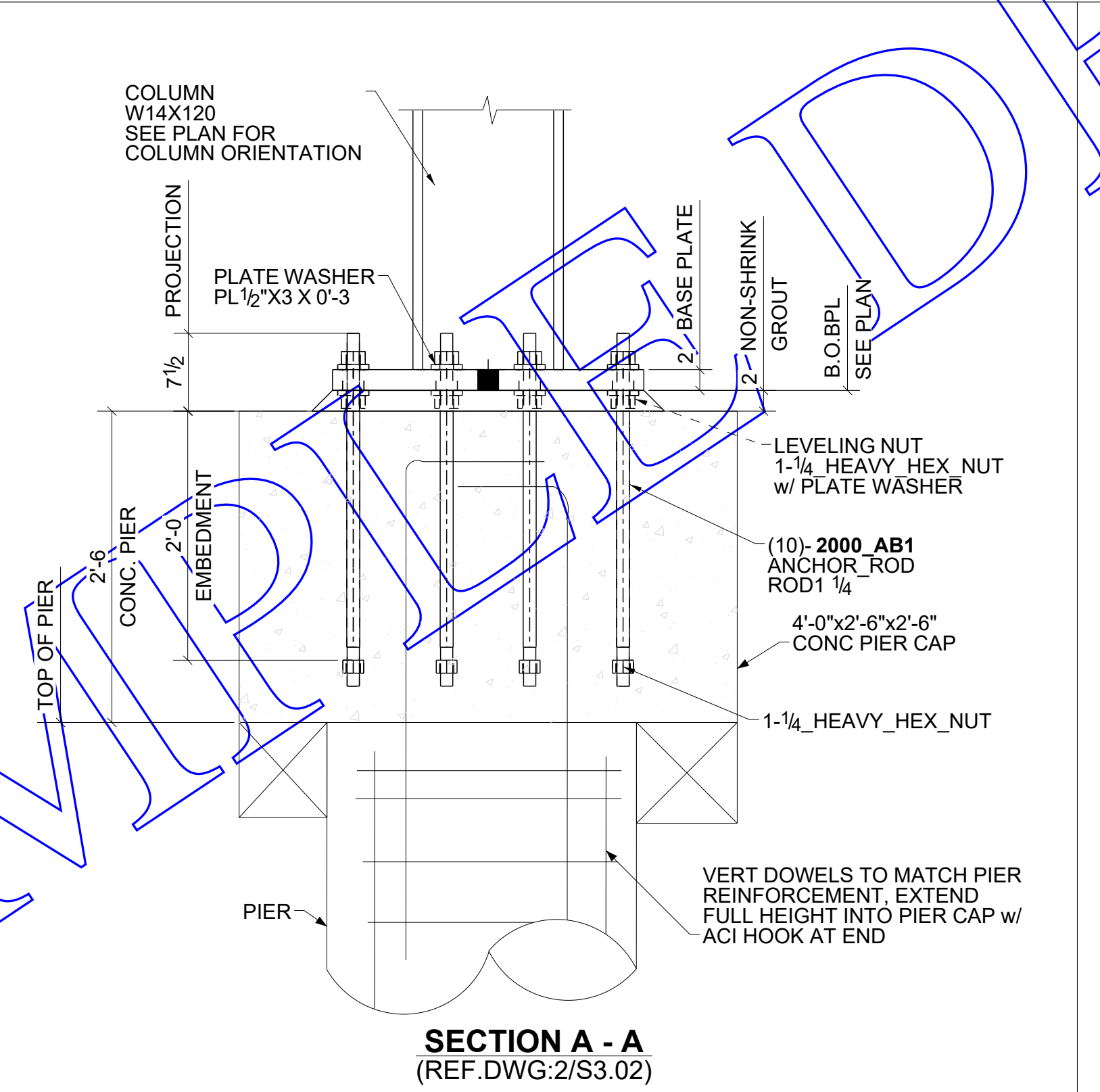
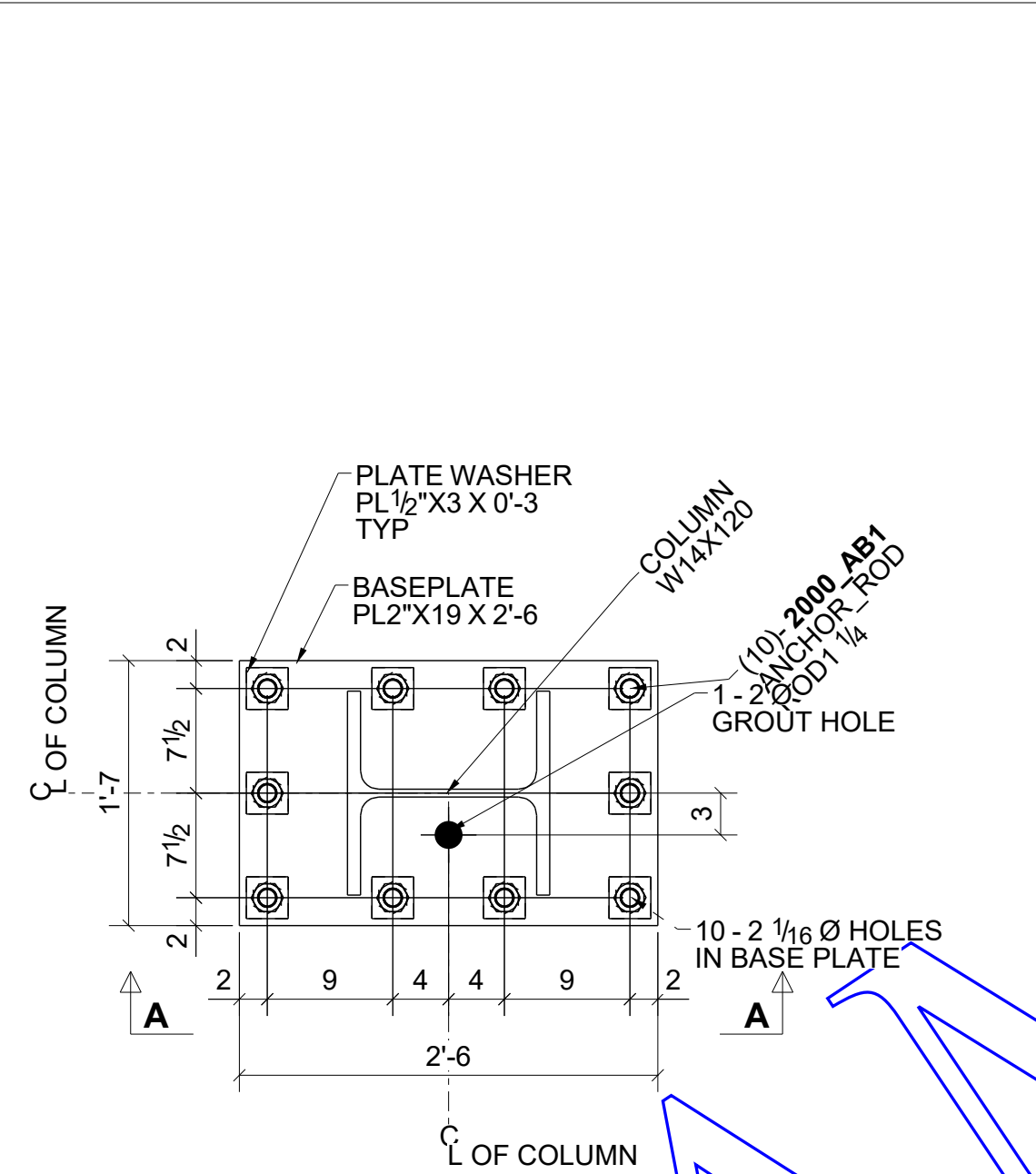
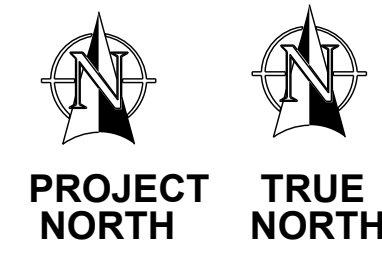
DETAILS OF : ANCHOR BOLT PLAN FOR CANOPY(AREA A1) REF. DWG. NO : S1.02

FOR TYPICAL SECTIONS AND DETAILS REFER SHEET AB201

DATE:	USE	DRAW BY: SAM	TEKLA VERSION: 21.1	DRAW BY: SAM	CHECKED BY: MAK	CONNECTIONS 3/4 Ø A325 UNLESS NOTED	DWG. NO. AB200	JOB NO. 20-1044
				DATE:	DATE:			



**PARTIAL ANCHOR BOLT SETTING PLAN FOR CANOPY (AREA A2)**  
(REF. DWG: 2/S1.02)



- ALL MATERIAL TO BE A36 UNLESS NOTED
- ALL TUBES TO BE A500-GRC (Fy=50) UNLESS NOTED
- ALL PIPES TO BE A53-GRB UNLESS NOTED
- ALL HS SHOP BOLTS TO BE TORQUED UNLESS NOTED
- ALL RUNNING DIMENSIONS FROM END OF MAIN MATERIAL
- ALL SHOP WELDS TO BE E70XX-LH ELECTRODES
- ALL COPIES TO BE RADUSED
- ALL BEAMS TO BE FABRICATED WITH RESIDUAL CAMBER UP
- MEMBERS ARE TO BE ERECTED SO THAT MARKED END IS IN SAME LOCATION AS ON ERECTION DRAWING

DETAILS OF : ANCHOR BOLT PLAN FOR CANOPY (AREA A2) REF. DWG. NO : S1.02, S3.02 & S6.01

DATE:	USE	DRAW BY: SAM	TEKLA VERSION: 21.1	DRAW BY: SAM	CHECKED BY: MAK	CONNECTIONS	DWG. NO.	JOB NO.
						3/4 Ø A325	AB201	20-1044
						UNLESS NOTED		